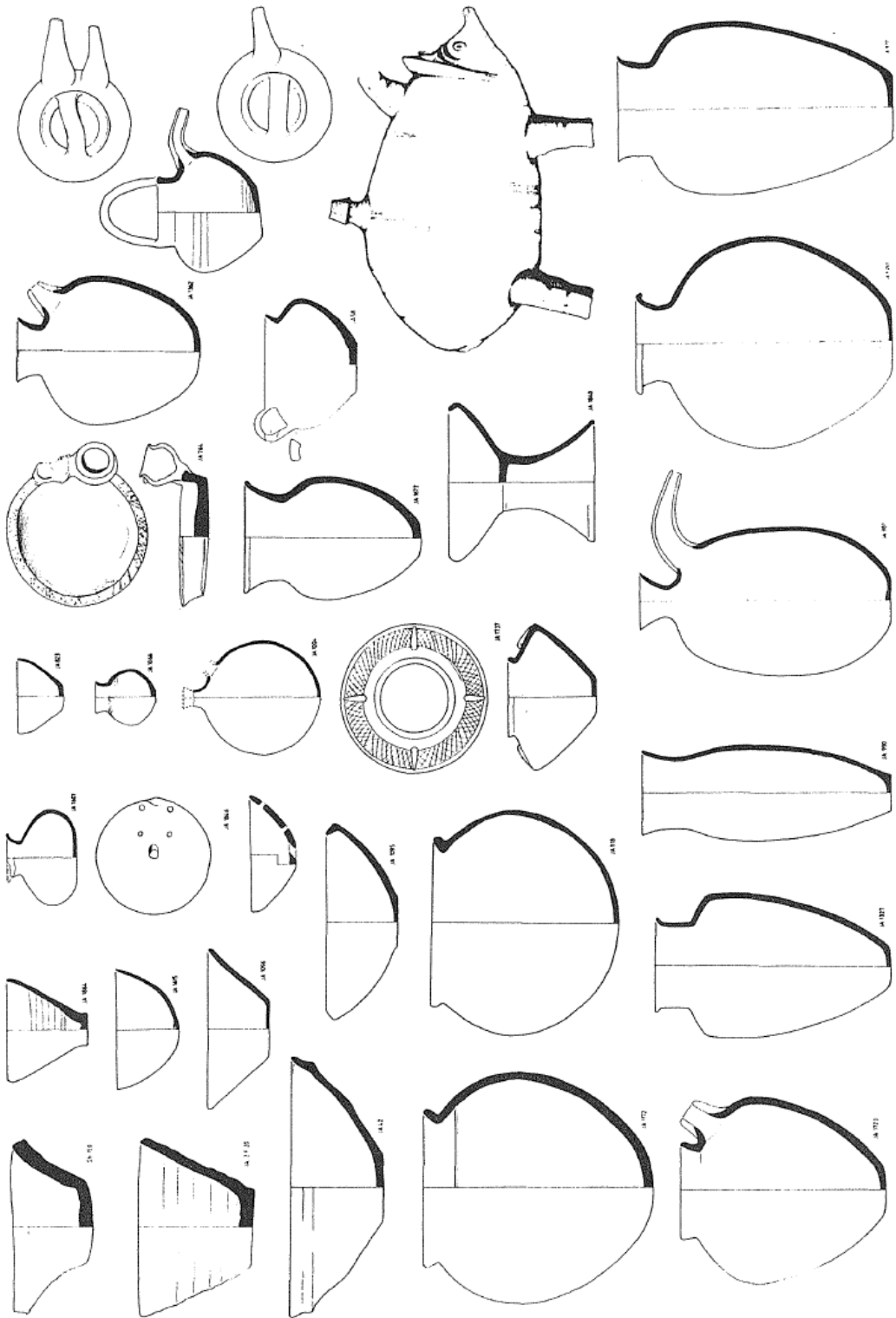


Appendices

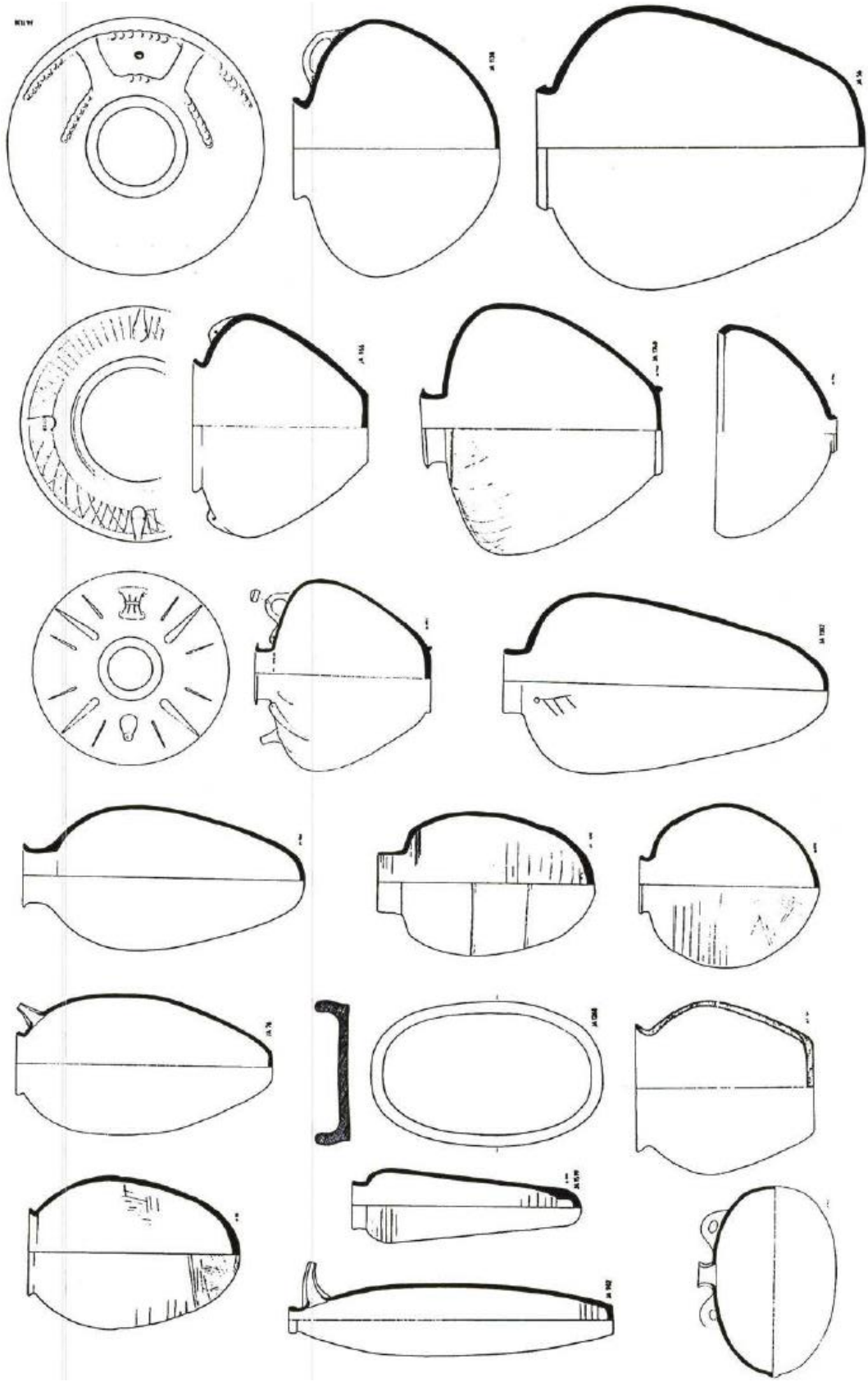
Appendix A: Pottery finds and vessel distribution in Jebel Aruda (Driel 2002).....	2
1. Small pottery of Jebel Aruda, not in similar scales (Driel 2002, 200).....	2
2. Large pottery of Jebel Aruda, not in similar scales (Driel 2002, 200).....	3
3. Distribution of Torpedo-shaped vessels in Jebel Aruda (Driel 2002, 201).....	4
4. Distribution of ‘Rolly-bins’ in Jebel Aruda (Driel 2002, 202).....	5
Appendix B: The six preservation strategies.....	6
Appendix C: Full lists of Dublin Core- and File list-elements.....	9
1. The full list of Dublin Core elements with a short description of each element.....	9
2. The complete list of file list elements that is definable for each file (DANS 2011, 7).....	9
Appendix D: Blender information and motivation for choosing Blender.....	11
Appendix E: The checklists of the FoA of LU and DANS.....	12
Appendix F: The complete JA_Codebook.....	13
Appendix G: The JA_filelist.....	16
Appendix H: The original sized 3D objects sizes within each 3D file format.....	67
Appendix I: Figures of the visual analysis of each 3D file format of the meshes in Blender.....	69
1. The BLEND format results of FP_JA_5E9_2_TEMP.....	69
2. The DAE format results of FP_JA_5E9_2_TEMP.....	71
3. The FBX format results of FP_JA_5E9_2_TEMP.....	73
4. The PLY format results of FP_JA_5E9_2_TEMP.....	75
5. The OBJ format results of FP_JA_5E9_2_TEMP.....	77
6. The X3D format results of FP_JA_5E9_2_TEMP.....	80

Appendix A: Pottery finds and vessel distribution in Jebel Aruda (Driel 2002)

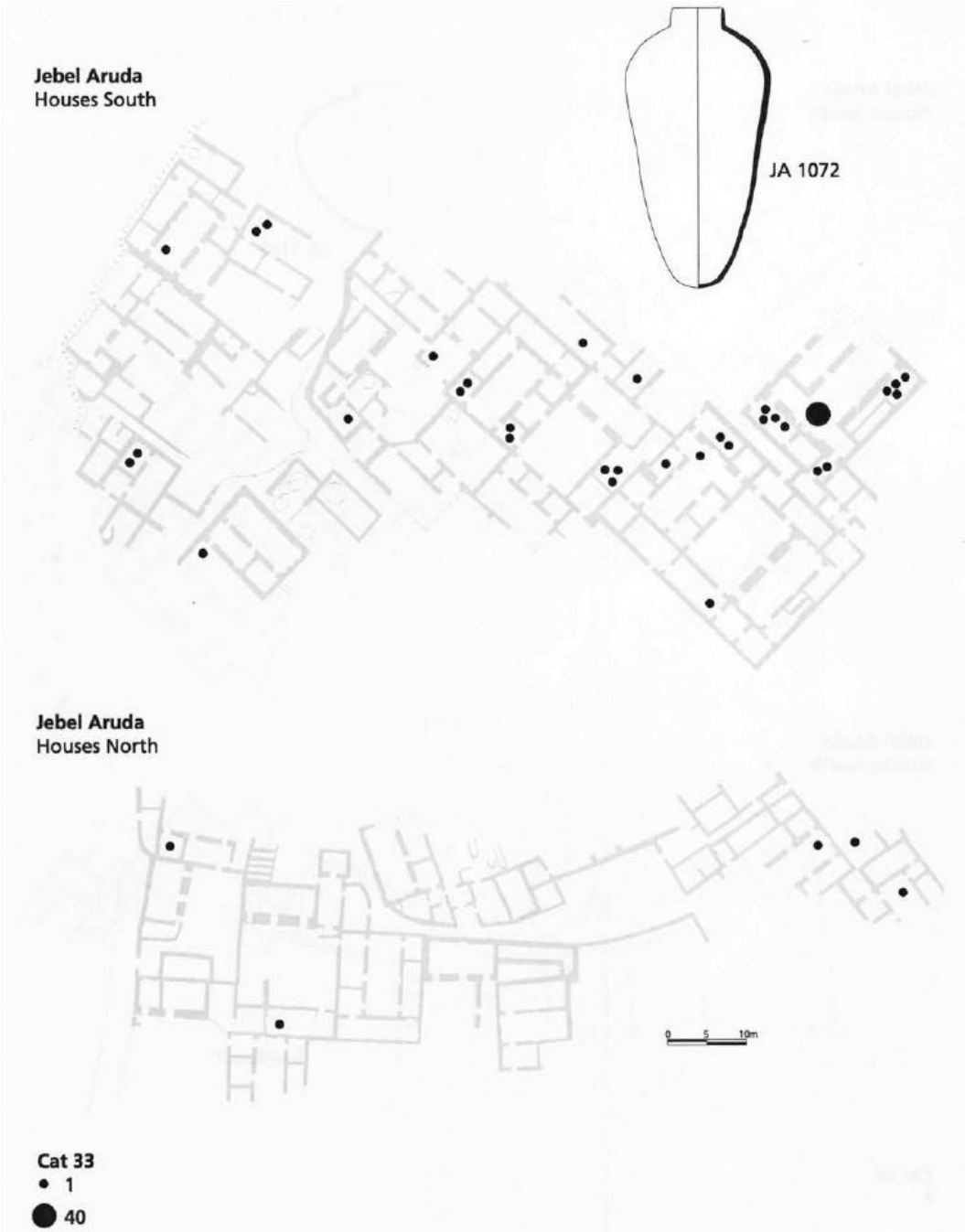
1. Small pottery of Jebel Aruda, not in similar scales (Driel 2002, 200).



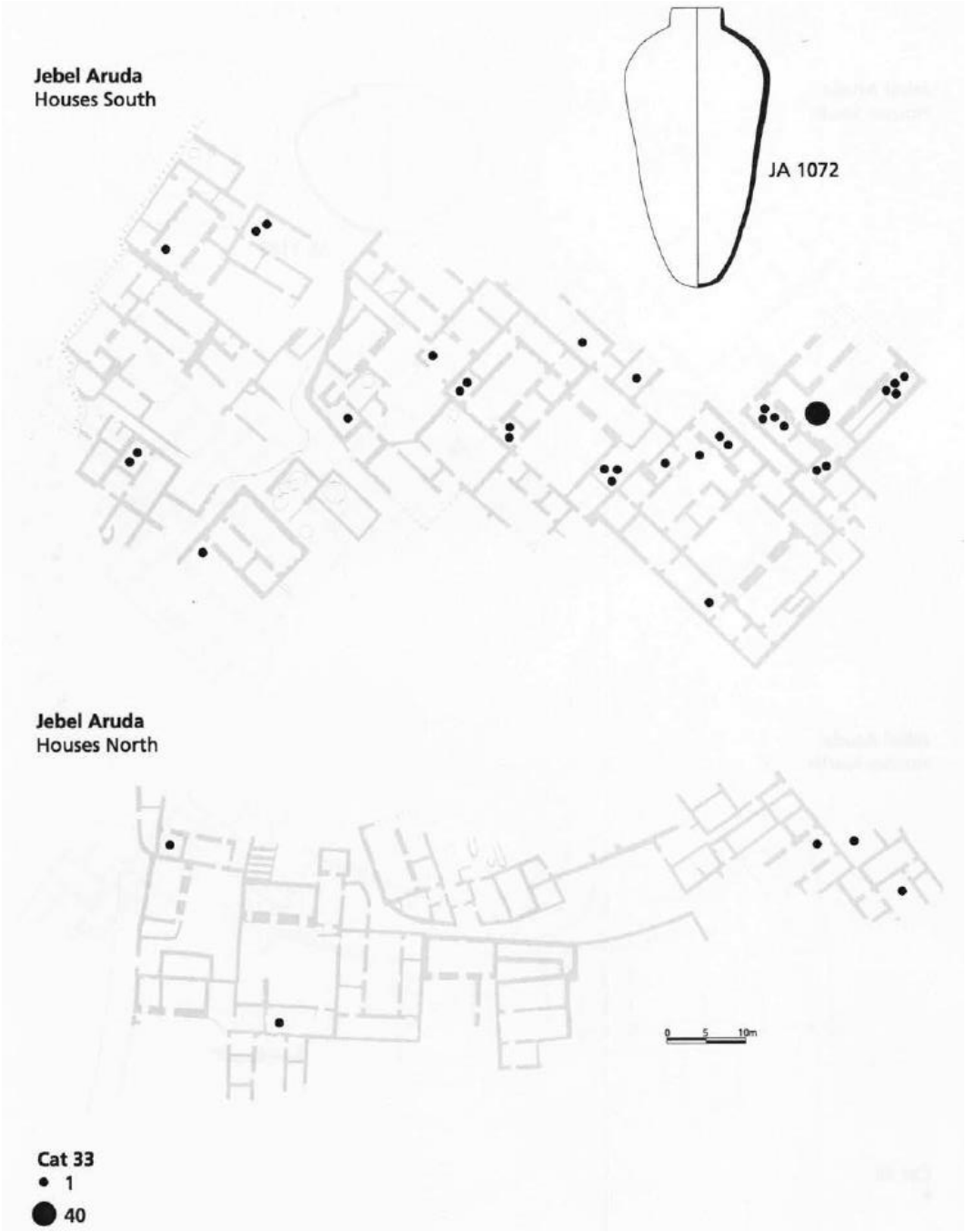
2. Large pottery of Jebel Aruda, not in similar scales (Driel 2002, 200).



3. Distribution of Torpedo-shaped vessels in Jebel Aruda (Driel 2002, 201).



4. Distribution of 'Rolly-bins' in Jebel Aruda (Driel 2002, 202).



Appendix B: The six preservation strategies.

PRESERVATION STRATEGIES	WHAT IS THE STRATEGY?	ADVANTAGES AND DISADVANTAGES OF THE STRATEGY
MIGRATION	<p>The Migration strategy is focused on accommodating the hardware, software and the file formats of digital objects to the most current version (El Idrissi 2019, 4-5).</p> <p>A typical example for hardware migration is upgrading servers from CPU i5 to CPU i7, a software example is upgrading from a 32-bit to a 64-bit operating environment, and changing the file format from PDF to PDF/A.</p>	<p>Advantage: Migration is very suitable if paradigm shifts of (3D) data decline or end.</p> <p>Disadvantage: Migration is heavily dependent on standards within an industry (Rothenberg 1998, 13). Migration is error prone and can lead to loss of information in file headers and bit streams (El Idrissi 2019, 5).</p>
TECHNOLOGY PRESERVATION	<p>Through the strategy of technology preservation, the technology on which the data is to be read and the data itself is maintained in an unchanged manner. Technology preservation implies that both the hardware and software are preserved for every (archaeological) project ever carried out, indicating an emphasis on the technological setting rather than on the digital objects (Shimray and Ramaiah 2018, 50).</p>	<p>Advantage: Preserves the data in its original state, so no technological loss of data.</p> <p>Disadvantage: The preserved data within this strategy cannot be accessed on contemporary platforms automatically and must be transferred manually.</p>
EMULATION	<p>Emulation tries to convey the “experience” that occurred during the generation of data. Data should not only be</p>	<p>Advantage: Emulation guarantees no information loss if the knowledge about the</p>

	<p>accessible to establish the authenticity, validity and its value. Data should also be accessible to understand and interpret how the document is experienced when the creator and original viewers observed it (Rothenberg 1998, 2; 1999, 3; El Idrissi 2019, 5). Emulation mimics the original obsolete platform within contemporary computer platforms.</p>	<p>access of the original data is maintained along the data (Rothenberg 1998, 11).</p> <p>Disadvantage: The emulation strategy is technically very challenging, very expensive over the long run and increasingly difficult as contemporary technology is distancing itself from originally employed technological systems (www.guides.archaeologydataservice.ac.uk).</p>
ENCAPSULATION	<p>The encapsulation strategy revolves around assembling and preserving the metadata, the file format specifications, the digital object and the necessary documentation to decode the digital object in the future (El Idrissi 2019, 5). Encapsulation involves the use of a human readable container or wrapper, to hold the digital content and its earlier described aspects. The wrapper contains information that supports organizational preservation in case of future decoding (Waugh <i>et al.</i> 2000, 178).</p>	<p>Advantage: The capsule allows the data to be rendered independently of the original computer platform.</p> <p>Disadvantage: The risks of unpublished or incomplete format specifications, the need to apply the migration process to follow the evolution of formats and storage overhead (Lee <i>et al.</i> 2002, 98).</p>
STANDARDIZATION	<p>The main purpose of the standardization strategy is to define reference models for digital preservation (El Idrissi 2019, 5). A reference model is for example the PDF/A format specialized for archiving PDF files for the long-term. The</p>	<p>Advantage: For the longer term, this strategy decreases the degree of change in the needed technology and facilitates interpretation (Shimray and Ramaiah 2018, 48).</p> <p>Disadvantage: Some reference models identified as institutional standards lack openness and the divide between</p>

	<p>target of the strategy is to develop and adopt openly available, stable and universally accepted file formats for all data types (Shimray and Ramaiah 2018, 50). Organizations should restrict themselves to conform to the standards provided by the digital archive (Chadha 2009, 4).</p>	<p>commercially released file formats vary loss of data can appear during the conversion of a non-standardized format to a standardized format (El Idrissi 2019, 5).</p>
<p>OBSOLESCENCE- PREVENTION</p>	<p>The aim of Obsolescence-prevention is, as the name implies, the preventing of data obsolescence. The strategy accentuates the differences between being and becoming obsolete (El Idrissi 2019, 5). The focus of the strategy is on tools that help to notify and assess preservation risk factors for potentially becoming obsolete file formats (Pearson and Webb 2008, 93).</p>	<p>Advantage: This strategy indicates that no changes within the hardware, software or formats are required to implement.</p> <p>Disadvantage: It is a very complicated assessment to determine whether formats are becoming obsolete. It is also difficult to address the huge number of uncommon formats for specific data types (audio, video, text, 3D) (Pearson and Webb 2008, 93).</p>

Appendix C: Full lists of Dublin Core- and File list-elements

1. The full list of Dublin Core elements with a short description of each element

(<https://guides.library.ucsc.edu>).

Contributor – The responsible entity that contributes to the resource

Coverage – The temporal or special topic of the resource, the applicability of the spatial resource, or the relevant jurisdiction of the resource.

Creator – An entity that is primarily responsible for the generation of the resource.

Date – The point of time or period that is associated with an event within the lifecycle of the resource.

Description – An account of the resource.

Format – The physical medium, file format, or resource dimensions.

Identifier – a reference that is unambiguous to the resource in its given context.

Language – The language used of the resource.

Publisher – The responsible entity for making the resource available.

Relation – A related resource.

Rights – Information about held rights over and within the resource.

Source –The resource from which the described resource derives from.

Subject – The resources topic.

Title – The name given to the resource.

Type – The genre or nature of the resource.

2. The complete list of file list elements that is definable for each file (DANS 2011, 7).

file_category	Classification category
file_name	Original file name
file_content	Description file content
archival_name	File name in archive format
file_required	Name necessary files
file_type	Technical file specification
data_format	Digital file format
software	Application software
hardware	Computer type
original_OS	Operation system
archival_format	Storage format (OBJ, FBX, TXT, CSV)
file_size	Size in Kb Of Mb
data_collector	Collector of the data
collection_date	Collection period
time_period	Period to which the data relate

purpose	Purpose of collection
collection_mode	Method of data acquisition
collection_situ	Circumstances during collecting data
sample_proc	Sample method
analytic_units	Observation unit
instruments	Research instruments
data_appreciation	data quality estimation
control_ops	data monitor
clean_ops	Cleaning of the data
data_missing	Completeness estimation
case_quantity	Number of observations
var_quantity	Number of variables
geog_cover	Geographic location (coordinates, boundary box)
geog_unit	Geographic units (km., m., degrees)
spatial_object	Spatial object type (vector, raster)
vector_type	Type of vector objects
vector_count	Number of vector objects
raster_type	Type of raster objects
row_count	Number of rows within raster
column_count	Number of columns within raster
mapprojection	Length/width map projection or local
local_georef	Local to national degrees in latitude and longitude
altitude_datum	Referential level of altitude measurements
depth_datum	Referential level of depth of ground level
position_accuracy	Accuracy of position determination
altitude_accuracy	Accuracy of z-measurements
source_document	type and scale of source document (map, aerial image)
source_lineage	Source treatment, derived information procedures
othmat_label	Related material descriptions
othmat_citation	Related Material references
othmat_codebook	Filename codebook
notes	Comments

Appendix D: Blender information and motivation for choosing Blender.

Blender is chosen as the application of use within this thesis for multiple reasons. Blender is a Free Software (free regarding users liberties) and users are able to use, change and distribute Blender for any purpose, because Blender adheres to the GNU General Public License (GPL) (www.Blender.org). Blender is in its complete form also available without charge, including the add-ons. Because the application is FOSS, free of charge and is also cross-platform for Windows, Macintosh and Linux, the methodology can be replicated easily for anyone with any operating system.

The initial release of Blender was in 1994 by Ton Roosendaal and is since 2002 managed by the Blender Foundation. Because the application is free and needs to match expense, the Blender foundation is funded by sponsors and donations by companies, studios and the community. Blender is one of the few FOSS within 3D software but has the largest active community because of it. This is based on the almost seven million Blender downloads in 2017 (www.blend4web.com) and the 207k members of the /r/Blender subreddit (www.reddit.com). The community helps with solving problems and offering guides on how to work with Blender, which is very convenient for working on 3D projects.

Another reason for choosing Blender is its relative wide variety of importable and exportable formats. The exportable formats of Blender are: DAE, ABC, FBX, BVH, PLY, PY, OBJ, X3D, STL, GLB, GLTF, XYZ, DXF, PC2, and BLEND. Besides importing and exporting, Blender also allows visual interpretation and manipulation of the 4 different features of 3D modeling (chapter 3.2). For each of these export options, there is an accumulation of format specific options per importable and exportable format, that allow users to store the model in NURBS instead of in an approximate geometry, or to store the model in a reduced scale. See figure 15 for export options of an OBJ file.

Appendix E: The checklists of the FoA of LU and DANS

1: The complete checklist of questions of the Faculty of Archaeology of Leiden University are (<https://www.organisatiegids.universiteitleiden.nl>):

- Does the data involve medical research, e.g. involving sickness and health?
- Does the research involve making use of animal testing?
- Has similar previous research been denied by the Ethics Committee?
- Are you aware of similar research conducted by other researchers that has been cancelled by the Ethics Committee?
- Does the data use genetic resources covered in the Convention on Biological Diversity (Nagoya protocol)?
- Does the research involve working with people or human remains?
- Does the research involve collecting, processing or analyzing (living or dead) people's personal data?
- Are personal data or samples exported to or imported from non-EU member states?
- Does the research involve chemicals or elements that might cause harm to animals, humans or the environment?

And for DANS (www.dans.knaw.nl):

- Is data acquired with informed consent?
- Is the personal data anonymized?
- If data contains personal data and it cannot be anonymized for research purposes, is a processing agreement with DANS conducted?

Appendix F: The complete JA_Codebook

Codebook JA 3D models

Introduction 3D file formats:

For some of the 3D file formats, additional files are required to open the 3D models correctly. For the DAE format, the additional JPG file needs to be in the same directory as well. For the Obj format, the additional MTL and JPG file need to be in the same directory.

Abbreviations:

JA – Jebel Aruda

BRB – Beveled rim bowl

FP – Flowerpot

DD – Name of a complex within Jebel Aruda

Temp – Temporary

BLEND – The Blender 3D format

DAE – The Collada 3D format

FBX – The Kaydara / Autodesk 3D format

OBJ – The Wavefront Technologies 3D format

PLY – The Polygon File 3D format

X3D – The 3D format managed by the Web3D Consortium.

F – Faces

K – 1000

Project metadata:

DOI

<http://doi.org/10.17026/dans-z9f-cu2j> (not active yet)

Authors

Name: Julius Pilzecker

Institution: Leiden University

Email: J.p.pilzecker@umail.leidenuniv.nl

Name: Vasiliki Lagari

Institution: Leiden University

Email: V.Lagari@umail.leidenuniv.nl

Name: Carol Van Driel

Institution: Leiden University

Email: C.van.driel@arch.leidenuniv.nl

Project_dates

Jebel Aruda Excavation: 1972-1982

3D generation: 2019

Archiving: 2020

Geographic_location

Faculty of Archaeology of Leiden University: Einsteinweg 2, Leiden, Netherlands

Jebel Aruda: Jebel Aruda, Khafse District, Syria

Time_period

6000-5100 BP (4000-3100 BC)

Funding_sources

Jebel Aruda Project: Leiden University

Access_license

CC0

Archaeological object metadata:

Material_classification

Clay pottery

Physical_characteristics

Beveled rim bowl: produced with local clay, undecorated and with porous texture. Normally 10 cm in height and 18 cm in diameter.

Flowerpot: crude chaff-tempered bowls, the sides flare out and have a string-cut base. Normally 16 cm in height and 16 cm in diameter.

Artefact_numbers

BRB: 9 artefacts

FP: 21 artefacts

Time_period

BRB: 5900-5000 BP (3900-3000 BC)

FP: 5600-5000 BP (3600-3000 BC)

3D paradata

Data_collection:

Data_Collector

Vasiliki Lagari

Scanning_method

Photogrammetry

scanning_Software

Agisoft metashape

Scanner_level_of_detail

Dense Point Cloud and mesh generated: High quality

Reprojection error

<0.5

Number_of_cameras

The number of cameras varied from 120 to 160 (parameters: size, height)

Model_units

1 unit = 1 m

Software_information:

Agisoft Metashape Professional 1.5.5 (64 bit)

Blender 2.80 (64 bit)

3D_generation_procedure:

The artifacts were generated in Agisoft Metashape with 120-160 photos per artifact.

The objects were lit using 6300 K led lamps (cool white).

The objects were generated with 2,500,000 faces and then decimated to 100000 faces in order to be easily manageable in Blender software

Basic_Data_Processing_procedure:

Alignment was done by the automatic align feature of Metashape. Different models were created for the bottom and top sides of each vessel. The next step was to create masks from each model and the last was to combine the all in one chunk and create the complete final model

Photo textures were generated in Agisoft Metashape (4096 x 1).

The mesh was exported from Agisoft Metashape as an ASCII OBJ file.

Individual_Data_manipulation_description

JA DD 385 33 = It does not have the exterior part of the bottom due to problems during the process

JA DD 385 45, JA DD1 22, JA DD1 75 = the original models of 1000000 faces instead of 2500000 (mistake)

Appendix G: The JA_Filelist

The complete filelist is also visible in a spreadsheet application in the separate appendix G.

File	Format	Content	Size (bytes)	Created	Othmat_codebook	Notes
JA_3Dmodel_BRB_2_temp_100000f_BLEND.blend	Blend	3D model of BRB 2_temp of 100,000 faces in the BLEND format	15049220	16-6-2020 12:33	JA_Codebook.pdf	
JA_3Dmodel_BRB_2_temp_100000f_DAE.dae	Dae	3D model of BRB 2_temp of 100,000 faces in the DAE format	14739890	16-6-2020 12:33	JA_Codebook.pdf	
JA_3Dmodel_BRB_2_temp_100000f_FBX.fbx	Fbx	3D model of BRB 2_temp of 100,000 faces in the FBX format	4225484	16-6-2020 12:33	JA_Codebook.pdf	
JA_3Dmodel_BRB_2_temp_100000f_OBJ.mtl	Mtl	additional file of OBJ file of BRB 2_temp	300	16-6-2020 12:33	JA_Codebook.pdf	
JA_3Dmodel_BRB_2_temp_100000f_OBJ.obj	Obj	3D model of BRB 2_temp of 100,000 faces in the OBJ format	9294864	16-6-2020 12:33	JA_Codebook.pdf	
JA_3Dmodel_BRB_2_temp_100000f_PLY.ply	Ply	3D model of BRB 2_temp of 100,000 faces in the PLY format	5826218	16-6-2020 12:33	JA_Codebook.pdf	
JA_3Dmodel_BRB_2_temp_100000f_X3D.x3d	X3d	3D model of BRB 2_temp of 100,000 faces in the X3D format	9951517	16-6-2020 12:33	JA_Codebook.pdf	

JA_3Dmodel_BRB_2_temp_JPG.jpg	Jpg	Texture of BRB 2_temp 3D model	32145 24	16-6- 2020 12:33		
JA_3Dmodel_BRB_2_temp_250000f_BLEND.blend	Blend	3D model of BRB 2_temp of 2,500,000 faces in the BLEND format	28060 6400	16-6- 2020 12:33	JA_Codebook.pdf	
JA_3Dmodel_BRB_2_temp_250000f_DAE.dae	Dae	3D model of BRB 2_temp of 2,500,000 faces in the DAE format	38352 1609	16-6- 2020 12:33	JA_Codebook.pdf	
JA_3Dmodel_BRB_2_temp_250000f_FBX.fbx	Fbx	3D model of BRB 2_temp of 2,500,000 faces in the FBX format	11480 5772	16-6- 2020 12:33	JA_Codebook.pdf	
JA_3Dmodel_BRB_2_temp_250000f_OBJ.mtl	Mtl	additional file of OBJ file of BRB 2_temp	301	16-6- 2020 12:33	JA_Codebook.pdf	
JA_3Dmodel_BRB_2_temp_250000f_OBJ.obj	Obj	3D model of BRB 2_temp of 2,500,000 faces in the OBJ format	26158 8689	16-6- 2020 12:33	JA_Codebook.pdf	
JA_3Dmodel_BRB_2_temp_250000f_PLY.ply	Ply	3D model of BRB 2_temp of 2,500,000 faces in the PLY format	15288 9524	16-6- 2020 12:33	JA_Codebook.pdf	
JA_3Dmodel_BRB_2_temp_250000f_X3D.x3d	X3d	3D model of BRB 2_temp of 2,500,000 faces in the X3D format	14291 8631	16-6- 2020 12:33	JA_Codebook.pdf	
JA_3Dmodel_BRB_3_temp_100000f_BLEND.blend	Blend	3D model of BRB 3_temp of 100,000 faces in the BLEND format	14876 008	16-6- 2020 12:33	JA_Codebook.pdf	

JA_3Dmodel_BRB_3_temp_100000f_DAE.dae	Dae	3D model of BRB 3_temp of 100,000 faces in the DAE format	14735 663	16-6- 2020 12:33	JA_Codebook.pdf	
JA_3Dmodel_BRB_3_temp_100000f_FBX.fbx	Fbx	3D model of BRB 3_temp of 100,000 faces in the FBX format	42816 12	16-6- 2020 12:33	JA_Codebook.pdf	
JA_3Dmodel_BRB_3_temp_100000f_OBJ.mtl	Mtl	additional file of OBJ file of BRB 3_temp	300	16-6- 2020 12:33	JA_Codebook.pdf	
JA_3Dmodel_BRB_3_temp_100000f_OBJ.obj	Obj	3D model of BRB 3_temp of 100,000 faces in the OBJ format	92932 09	16-6- 2020 12:33	JA_Codebook.pdf	
JA_3Dmodel_BRB_3_temp_100000f_PLY.ply	Ply	3D model of BRB 3_temp of 100,000 faces in the PLY format	58293 30	16-6- 2020 12:33	JA_Codebook.pdf	
JA_3Dmodel_BRB_3_temp_100000f_X3D.x3d	X3d	3D model of BRB 3_temp of 100,000 faces in the X3D format	99477 16	16-6- 2020 12:33	JA_Codebook.pdf	
JA_3Dmodel_BRB_3_temp_JPG.jpg	Jpg	Texture of BRB 3_temp 3D model	30398 88	16-6- 2020 12:33		
JA_3Dmodel_BRB_3_temp_2500000f_BLEND.blend	Blend	3D model of BRB 3_temp of 2,500,000 faces in the BLEND format	28367 5728	16-6- 2020 12:33	JA_Codebook.pdf	
JA_3Dmodel_BRB_3_temp_2500000f_DAE.dae	Dae	3D model of BRB 3_temp of 2,500,000 faces in the DAE format	38341 5528	16-6- 2020 12:34	JA_Codebook.pdf	

JA_3Dmodel_BRB_3_temp_250000f_FBX.fbx	Fbx	3D model of BRB 3_temp of 2,500,000 faces in the FBX format	13276 9404	16-6-2020 12:34	JA_Codebook.pdf	
JA_3Dmodel_BRB_3_temp_250000f_OBJ.mtl	Mtl	additional file of OBJ file of BRB 3_temp	301	16-6-2020 12:34	JA_Codebook.pdf	
JA_3Dmodel_BRB_3_temp_250000f_OBJ.obj	Obj	3D model of BRB 3_temp of 2,500,000 faces in the OBJ format	26144 5254	16-6-2020 12:34	JA_Codebook.pdf	
JA_3Dmodel_BRB_3_temp_250000f_PLY.ply	Ply	3D model of BRB 3_temp of 2,500,000 faces in the PLY format	15284 0463	16-6-2020 12:34	JA_Codebook.pdf	
JA_3Dmodel_BRB_3_temp_250000f_X3D.x3d	X3d	3D model of BRB 3_temp of 2,500,000 faces in the X3D format	14272 8459	16-6-2020 12:34	JA_Codebook.pdf	
JA_3Dmodel_BRB_4_temp_100000f_BLEND.blend	Blend	3D model of BRB 4_temp of 100,000 faces in the BLEND format	14712 352	16-6-2020 12:34	JA_Codebook.pdf	
JA_3Dmodel_BRB_4_temp_100000f_DAE.dae	Dae	3D model of BRB 4_temp of 100,000 faces in the DAE format	14526 347	16-6-2020 12:34	JA_Codebook.pdf	
JA_3Dmodel_BRB_4_temp_100000f_FBX.fbx	Fbx	3D model of BRB 4_temp of 100,000 faces in the FBX format	34820 60	16-6-2020 12:34	JA_Codebook.pdf	
JA_3Dmodel_BRB_4_temp_100000f_OBJ.mtl	Mtl	additional file of OBJ file of BRB 4_temp	305	16-6-2020 12:34	JA_Codebook.pdf	

JA_3Dmodel_BRB_4_temp_100000f_OBJ.obj	Obj	3D model of BRB 4_temp of 100,000 faces in the OBJ format	91559 16	16-6- 2020 12:34	JA_Codebook.pdf	
JA_3Dmodel_BRB_4_temp_100000f_PLY.ply	Ply	3D model of BRB 4_temp of 100,000 faces in the PLY format	57414 19	16-6- 2020 12:34	JA_Codebook.pdf	
JA_3Dmodel_BRB_4_temp_100000f_X3D.x3d	X3d	3D model of BRB 4_temp of 100,000 faces in the X3D format	98043 85	16-6- 2020 12:34	JA_Codebook.pdf	
JA_3Dmodel_BRB_4_temp_JPG.jpg	Jpg	Texture of BRB 4_temp 3D model	30163 09	16-6- 2020 12:34		
JA_3Dmodel_BRB_4_temp_2468000f_BLEND.blend	Blend	3D model of BRB 4_temp of 2,468,000 faces in the BLEND format	28011 5112	16-6- 2020 12:34	JA_Codebook.pdf	Contains only 2,468,000 faces
JA_3Dmodel_BRB_4_temp_2468000f_DAE.dae	Dae	3D model of BRB 4_temp of 2,468,000 faces in the DAE format	37828 4651	16-6- 2020 12:35	JA_Codebook.pdf	Contains only 2,468,000 faces
JA_3Dmodel_BRB_4_temp_2468000f_FBX.fbx	Fbx	3D model of BRB 4_temp of 2,468,000 faces in the FBX format	83546 364	16-6- 2020 12:35	JA_Codebook.pdf	Contains only 2,468,000 faces
JA_3Dmodel_BRB_4_temp_2468000f_OBJ.mtl	Mtl	additional file of OBJ file of BRB 4_temp	306	16-6- 2020 12:35	JA_Codebook.pdf	
JA_3Dmodel_BRB_4_temp_2468000f_OBJ.obj	Obj	3D model of BRB 4_temp of 2,468,000 faces in the OBJ format	25738 1683	16-6- 2020 12:35	JA_Codebook.pdf	Contains only 2,468,000 faces

JA_3Dmodel_BRB_4_temp_2468000f_PLY.ply	Ply	3D model of BRB 4_temp of 2,468,000 faces in the PLY format	15022 5155	16-6-2020 12:35	JA_Codebook.pdf	Contains only 2,468,000 faces
JA_3Dmodel_BRB_4_temp_2468000f_X3D.x3d	X3d	3D model of BRB 4_temp of 2,468,000 faces in the X3D format	14038 3025	16-6-2020 12:35	JA_Codebook.pdf	Contains only 2,468,000 faces
JA_3Dmodel_BRB_5_temp_100000f_BLEND.blend	Blend	3D model of BRB 5_temp of 100,000 faces in the BLEND format	14793 848	16-6-2020 12:35	JA_Codebook.pdf	
JA_3Dmodel_BRB_5_temp_100000f_DAE.dae	Dae	3D model of BRB 5_temp of 100,000 faces in the DAE format	14587 173	16-6-2020 12:35	JA_Codebook.pdf	
JA_3Dmodel_BRB_5_temp_100000f_FBX.fbx	Fbx	3D model of BRB 5_temp of 100,000 faces in the FBX format	34941 24	16-6-2020 12:35	JA_Codebook.pdf	
JA_3Dmodel_BRB_5_temp_100000f_OBJ.mtl	Mtl	additional file of OBJ file of BRB 5_temp	300	16-6-2020 12:35	JA_Codebook.pdf	
JA_3Dmodel_BRB_5_temp_100000f_OBJ.obj	Obj	3D model of BRB 5_temp of 100,000 faces in the OBJ format	92013 81	16-6-2020 12:35	JA_Codebook.pdf	
JA_3Dmodel_BRB_5_temp_100000f_PLY.ply	Ply	3D model of BRB 5_temp of 100,000 faces in the PLY format	58007 34	16-6-2020 12:35	JA_Codebook.pdf	
JA_3Dmodel_BRB_5_temp_100000f_X3D.x3d	X3d	3D model of BRB 5_temp of 100,000 faces in the X3D format	98341 97	16-6-2020 12:35	JA_Codebook.pdf	

JA_3Dmodel_BRB_5_temp_JPG.jpg	Jpg	Texture of BRB 5_temp 3D model	3063006	16-6-2020 12:35		
JA_3Dmodel_BRB_5_temp_2476000f_BLEND.blend	Blend	3D model of BRB 5_temp of 2,476,000 faces in the BLEND format	281071104	16-6-2020 12:35	JA_Codebook.pdf	Contains only 2,476,000 faces
JA_3Dmodel_BRB_5_temp_2476000f_DAE.dae	Dae	3D model of BRB 5_temp of 2,476,000 faces in the DAE format	380115934	16-6-2020 12:35	JA_Codebook.pdf	Contains only 2,476,000 faces
JA_3Dmodel_BRB_5_temp_2476000f_FBX.fbx	Fbx	3D model of BRB 5_temp of 2,476,000 faces in the FBX format	84909884	16-6-2020 12:36	JA_Codebook.pdf	Contains only 2,476,000 faces
JA_3Dmodel_BRB_5_temp_2476000f_OBJ.mtl	Mtl	additional file of OBJ file of BRB 5_temp	301	16-6-2020 12:36	JA_Codebook.pdf	
JA_3Dmodel_BRB_5_temp_2476000f_OBJ.obj	Obj	3D model of BRB 5_temp of 2,476,000 faces in the OBJ format	258653970	16-6-2020 12:36	JA_Codebook.pdf	Contains only 2,476,000 faces
JA_3Dmodel_BRB_5_temp_2476000f_PLY.ply	Ply	3D model of BRB 5_temp of 2,476,000 faces in the PLY format	151416503	16-6-2020 12:36	JA_Codebook.pdf	Contains only 2,476,000 faces
JA_3Dmodel_BRB_5_temp_2476000f_X3D.x3d	X3d	3D model of BRB 5_temp of 2,476,000 faces in the X3D format	141017829	16-6-2020 12:43	JA_Codebook.pdf	Contains only 2,476,000 faces
JA_3Dmodel_BRB_6_temp_100000f_BLEND.blend	Blend	3D model of BRB 6_temp of 100,000 faces in the BLEND format	14143324	16-6-2020 12:43	JA_Codebook.pdf	

JA_3Dmodel_BRB_6_temp_100000f_DAE.dae	Dae	3D model of BRB 6_temp of 100,000 faces in the DAE format	14513 444	16-6- 2020 12:43	JA_Codebook.pdf	
JA_3Dmodel_BRB_6_temp_100000f_FBX.fbx	Fbx	3D model of BRB 6_temp of 100,000 faces in the FBX format	34707 64	16-6- 2020 12:43	JA_Codebook.pdf	
JA_3Dmodel_BRB_6_temp_100000f_OBJ.mtl	Mtl	additional file of OBJ file of BRB 6_temp	300	16-6- 2020 12:43	JA_Codebook.pdf	
JA_3Dmodel_BRB_6_temp_100000f_OBJ.obj	Obj	3D model of BRB 6_temp of 100,000 faces in the OBJ format	91589 92	16-6- 2020 12:43	JA_Codebook.pdf	
JA_3Dmodel_BRB_6_temp_100000f_PLY.ply	Ply	3D model of BRB 6_temp of 100,000 faces in the PLY format	57717 79	16-6- 2020 12:43	JA_Codebook.pdf	
JA_3Dmodel_BRB_6_temp_100000f_X3D.x3d	X3d	3D model of BRB 6_temp of 100,000 faces in the X3D format	97937 37	16-6- 2020 12:43	JA_Codebook.pdf	
JA_3Dmodel_BRB_6_temp_JPG.jpg	Jpg	Texture of BRB 6_temp 3D model	24760 99	16-6- 2020 12:43		
JA_3Dmodel_BRB_6_temp_2462000f_BLEND.blend	Blend	3D model of BRB 6_temp of 2,462,000 faces in the BLEND format	27889 1108	16-6- 2020 12:43	JA_Codebook.pdf	Contains only 2,462,000 faces
JA_3Dmodel_BRB_6_temp_2462000f_DAE.dae	Dae	3D model of BRB 6_temp of 2,462,000 faces in the DAE format	37760 5878	16-6- 2020 12:44	JA_Codebook.pdf	Contains only 2,462,000 faces

JA_3Dmodel_BRB_6_temp_2462000f_FBX.fbx	Fbx	3D model of BRB 6_temp of 2,462,000 faces in the FBX format	85459 948	16-6-2020 12:44	JA_Codebook.pdf	Contains only 2,462,000 faces
JA_3Dmodel_BRB_6_temp_2462000f_OBJ.mtl	Mtl	additional file of OBJ file of BRB 6_temp	263	16-6-2020 12:44	JA_Codebook.pdf	
JA_3Dmodel_BRB_6_temp_2462000f_OBJ.obj	Obj	3D model of BRB 6_temp of 2,462,000 faces in the OBJ format	25729 5597	16-6-2020 12:44	JA_Codebook.pdf	Contains only 2,462,000 faces
JA_3Dmodel_BRB_6_temp_2462000f_PLY.ply	Ply	3D model of BRB 6_temp of 2,462,000 faces in the PLY format	15060 9182	16-6-2020 12:44	JA_Codebook.pdf	Contains only 2,462,000 faces
JA_3Dmodel_BRB_6_temp_2462000f_X3D.x3d	X3d	3D model of BRB 6_temp of 2,462,000 faces in the X3D format	14070 8503	16-6-2020 12:44	JA_Codebook.pdf	Contains only 2,462,000 faces
JA_3Dmodel_BRB_7_temp_100000f_BLEND.blend	Blend	3D model of BRB 7_temp of 100,000 faces in the BLEND format	11601 768	16-6-2020 12:44	JA_Codebook.pdf	
JA_3Dmodel_BRB_7_temp_100000f_DAE.dae	Dae	3D model of BRB 7_temp of 100,000 faces in the DAE format	14430 595	16-6-2020 12:44	JA_Codebook.pdf	
JA_3Dmodel_BRB_7_temp_100000f_FBX.fbx	Fbx	3D model of BRB 7_temp of 100,000 faces in the FBX format	34422 04	16-6-2020 12:44	JA_Codebook.pdf	
JA_3Dmodel_BRB_7_temp_100000f_OBJ.mtl	Mtl	additional file of OBJ file of BRB 7_temp	297	16-6-2020 12:44	JA_Codebook.pdf	

JA_3Dmodel_BRB_7_temp_100000f_OBJ.obj	Obj	3D model of BRB 7_temp of 100,000 faces in the OBJ format	9100717	16-6-2020 12:44	JA_Codebook.pdf	
JA_3Dmodel_BRB_7_temp_100000f_PLY.ply	Ply	3D model of BRB 7_temp of 100,000 faces in the PLY format	5730570	16-6-2020 12:44	JA_Codebook.pdf	
JA_3Dmodel_BRB_7_temp_100000f_X3D.x3d	X3d	3D model of BRB 7_temp of 100,000 faces in the X3D format	9732547	16-6-2020 12:44	JA_Codebook.pdf	
JA_3Dmodel_BRB_7_temp_JPG.jpg	Jpg	Texture of BRB 7_temp 3D model	2352736	16-6-2020 12:44		
JA_3Dmodel_BRB_7_temp_2447000f_BLEND.blend	Blend	3D model of BRB 7_temp of 2,447,000 faces in the BLEND format	274760720	16-6-2020 12:44	JA_Codebook.pdf	Contains only 2,447,000 faces
JA_3Dmodel_BRB_7_temp_2447000f_DAE.dae	Dae	3D model of BRB 7_temp of 2,447,000 faces in the DAE format	375567187	16-6-2020 12:44	JA_Codebook.pdf	Contains only 2,447,000 faces
JA_3Dmodel_BRB_7_temp_2447000f_FBX.fbx	Fbx	3D model of BRB 7_temp of 2,447,000 faces in the FBX format	82686572	16-6-2020 12:45	JA_Codebook.pdf	Contains only 2,447,000 faces
JA_3Dmodel_BRB_7_temp_2447000f_OBJ.mtl	Mtl	additional file of OBJ file of BRB 7_temp	297	16-6-2020 12:45	JA_Codebook.pdf	
JA_3Dmodel_BRB_7_temp_2447000f_OBJ.obj	Obj	3D model of BRB 7_temp of 2,447,000 faces in the OBJ format	255566011	16-6-2020 12:45	JA_Codebook.pdf	Contains only 2,447,000 faces

JA_3Dmodel_BRB_7_temp_2447000f_PLY.ply	Ply	3D model of BRB 7_temp of 2,447,000 faces in the PLY format	14954 0694	16-6- 2020 12:45	JA_Codebook.pdf	Contains only 2,447,000 faces
JA_3Dmodel_BRB_7_temp_2447000f_X3D.x3d	X3d	3D model of BRB 7_temp of 2,447,000 faces in the X3D format	13983 7567	16-6- 2020 12:45	JA_Codebook.pdf	Contains only 2,447,000 faces
JA_3Dmodel_BRB_8_temp_100000f_BLEND.blend	Blend	3D model of BRB 8_temp of 100,000 faces in the BLEND format	11697 736	16-6- 2020 12:45	JA_Codebook.pdf	
JA_3Dmodel_BRB_8_temp_100000f_DAE.dae	Dae	3D model of BRB 8_temp of 100,000 faces in the DAE format	14521 209	16-6- 2020 12:45	JA_Codebook.pdf	
JA_3Dmodel_BRB_8_temp_100000f_FBX.fbx	Fbx	3D model of BRB 8_temp of 100,000 faces in the FBX format	34731 16	16-6- 2020 12:45	JA_Codebook.pdf	
JA_3Dmodel_BRB_8_temp_100000f_OBJ.mtl	Mtl	additional file of OBJ file of BRB 8_temp	297	16-6- 2020 12:45	JA_Codebook.pdf	
JA_3Dmodel_BRB_8_temp_100000f_OBJ.obj	Obj	3D model of BRB 8_temp of 100,000 faces in the OBJ format	91594 85	16-6- 2020 12:45	JA_Codebook.pdf	
JA_3Dmodel_BRB_8_temp_100000f_PLY.ply	Ply	3D model of BRB 8_temp of 100,000 faces in the PLY format	57460 37	16-6- 2020 12:45	JA_Codebook.pdf	
JA_3Dmodel_BRB_8_temp_100000f_X3D.x3d	X3d	3D model of BRB 8_temp of 100,000 faces in the X3D format	98004 53	16-6- 2020 12:45	JA_Codebook.pdf	

JA_3Dmodel_BRB_8_temp_JPG.jpg	Jpg	Texture of BRB 8_temp 3D model	22085 93	16-6- 2020 12:45		
JA_3Dmodel_BRB_8_temp_2465000f_BLEND.blend	Blend	3D model of BRB 8_temp of 2,465,000 faces in the BLEND format	27674 5704	16-6- 2020 12:45	JA_Codebook.pdf	Contains only 2,465,000 faces
JA_3Dmodel_BRB_8_temp_2465000f_DAE.dae	Dae	3D model of BRB 8_temp of 2,465,000 faces in the DAE format	37771 9718	16-6- 2020 12:45	JA_Codebook.pdf	Contains only 2,465,000 faces
JA_3Dmodel_BRB_8_temp_2465000f_FBX.fbx	Fbx	3D model of BRB 8_temp of 2,465,000 faces in the FBX format	85589 644	16-6- 2020 12:45	JA_Codebook.pdf	Contains only 2,465,000 faces
JA_3Dmodel_BRB_8_temp_2465000f_OBJ.mtl	Mtl	additional file of OBJ file of BRB 8_temp	298	16-6- 2020 12:46	JA_Codebook.pdf	
JA_3Dmodel_BRB_8_temp_2465000f_OBJ.obj	Obj	3D model of BRB 8_temp of 2,465,000 faces in the OBJ format	25752 0898	16-6- 2020 12:46	JA_Codebook.pdf	Contains only 2,465,000 faces
JA_3Dmodel_BRB_8_temp_2465000f_PLY.ply	Ply	3D model of BRB 8_temp of 2,465,000 faces in the PLY format	15051 4829	16-6- 2020 12:46	JA_Codebook.pdf	Contains only 2,465,000 faces
JA_3Dmodel_BRB_8_temp_2465000f_X3D.x3d	X3d	3D model of BRB 8_temp of 2,465,000 faces in the X3D format	14069 0282	16-6- 2020 12:46	JA_Codebook.pdf	Contains only 2,465,000 faces
JA_3Dmodel_BRB_9_temp_100000f_BLEND.blend	Blend	3D model of BRB 9_temp of 100,000 faces in the BLEND format	11834 888	16-6- 2020 12:46	JA_Codebook.pdf	

JA_3Dmodel_BRB_9_temp_100000f_DAE.dae	Dae	3D model of BRB 9_temp of 100,000 faces in the DAE format	14741672	16-6-2020 12:46	JA_Codebook.pdf	
JA_3Dmodel_BRB_9_temp_100000f_FBX.fbx	Fbx	3D model of BRB 9_temp of 100,000 faces in the FBX format	4232940	16-6-2020 12:46	JA_Codebook.pdf	
JA_3Dmodel_BRB_9_temp_100000f_OBJ.mtl	Mtl	additional file of OBJ file of BRB 9_temp	297	16-6-2020 12:46	JA_Codebook.pdf	
JA_3Dmodel_BRB_9_temp_100000f_OBJ.obj	Obj	3D model of BRB 9_temp of 100,000 faces in the OBJ format	9280839	16-6-2020 12:46	JA_Codebook.pdf	
JA_3Dmodel_BRB_9_temp_100000f_PLY.ply	Ply	3D model of BRB 9_temp of 100,000 faces in the PLY format	5797467	16-6-2020 12:46	JA_Codebook.pdf	
JA_3Dmodel_BRB_9_temp_100000f_X3D.x3d	X3d	3D model of BRB 9_temp of 100,000 faces in the X3D format	5406701	16-6-2020 12:46	JA_Codebook.pdf	
JA_3Dmodel_BRB_9_temp_JPG.jpg	Jpg	Texture of BRB 9_temp 3D model	2644029	16-6-2020 12:46		
JA_3Dmodel_BRB_9_temp_2500000f_BLEND.blend	Blend	3D model of BRB 9_temp of 2,500,000 faces in the BLEND format	280634608	16-6-2020 12:46	JA_Codebook.pdf	
JA_3Dmodel_BRB_9_temp_2500000f_DAE.dae	Dae	3D model of BRB 9_temp of 2,500,000 faces in the DAE format	383943024	16-6-2020 12:46	JA_Codebook.pdf	

JA_3Dmodel_BRB_9_temp_2500000f_FBX.fbx	Fbx	3D model of BRB 9_temp of 2,500,000 faces in the FBX format	13112 5884	16-6-2020 12:47	JA_Codebook.pdf	
JA_3Dmodel_BRB_9_temp_2500000f_OBJ.mtl	Mtl	additional file of OBJ file of BRB 9_temp	298	16-6-2020 12:47	JA_Codebook.pdf	
JA_3Dmodel_BRB_9_temp_2500000f_OBJ.obj	Obj	3D model of BRB 9_temp of 2,500,000 faces in the OBJ format	26130 7845	16-6-2020 12:47	JA_Codebook.pdf	
JA_3Dmodel_BRB_9_temp_2500000f_PLY.ply	Ply	3D model of BRB 9_temp of 2,500,000 faces in the PLY format	15256 0009	16-6-2020 12:40	JA_Codebook.pdf	
JA_3Dmodel_BRB_9_temp_2500000f_X3D.x3d	X3d	3D model of BRB 9_temp of 2,500,000 faces in the X3D format	14278 3528	16-6-2020 12:40	JA_Codebook.pdf	
JA_3Dmodel_BRB_JA_5E9_1_temp_100000f_BLEND.blend	Blend	3D model of BRB JA_5E9_1_temp of 100,000 faces in the BLEND format	15023 984	16-6-2020 12:40	JA_Codebook.pdf	
JA_3Dmodel_BRB_JA_5E9_1_temp_100000f_DAE.dae	Dae	3D model of BRB JA_5E9_1_temp of 100,000 faces in the DAE format	14757 412	16-6-2020 12:40	JA_Codebook.pdf	
JA_3Dmodel_BRB_JA_5E9_1_temp_100000f_FBX.fbx	Fbx	3D model of BRB JA_5E9_1_temp of 100,000 faces in the FBX format	42679 96	16-6-2020 12:40	JA_Codebook.pdf	
JA_3Dmodel_BRB_JA_5E9_1_temp_100000f_OBJ.mtl	Mtl	additional file of OBJ file of BRB JA_5E9_1_temp	304	16-6-2020 12:40	JA_Codebook.pdf	

JA_3Dmodel_BRB_JA_5E9_1_temp_1 00000f_OBJ.obj	Obj	3D model of BRB JA_5E9_1_temp of 100,000 faces in the OBJ format	92662 72	16-6- 2020 12:40	JA_Codebook.pdf	
JA_3Dmodel_BRB_JA_5E9_1_temp_1 00000f_PLY.ply	Ply	3D model of BRB JA_5E9_1_temp of 100,000 faces in the PLY format	57675 22	16-6- 2020 12:40	JA_Codebook.pdf	
JA_3Dmodel_BRB_JA_5E9_1_temp_1 00000f_X3D.x3d	X3d	3D model of BRB JA_5E9_1_temp of 100,000 faces in the X3D format	99430 45	16-6- 2020 12:40	JA_Codebook.pdf	
JA_3Dmodel_BRB_JA_5E9_1_temp_JP G.jpg	Jpg	Texture of BRB JA_5E9_1_temp 3D model	32053 33	16-6- 2020 12:40		
JA_3Dmodel_BRB_JA_5E9_1_temp_2 500000f_BLEND.blend	Blend	3D model of BRB JA_5E9_1_temp of 2,500,000 faces in the BLEND format	28384 0680	16-6- 2020 12:40	JA_Codebook.pdf	
JA_3Dmodel_BRB_JA_5E9_1_temp_2 500000f_DAE.dae	Dae	3D model of BRB JA_5E9_1_temp of 2,500,000 faces in the DAE format	38419 1329	16-6- 2020 12:40	JA_Codebook.pdf	
JA_3Dmodel_BRB_JA_5E9_1_temp_2 500000f_FBX.fbx	Fbx	3D model of BRB JA_5E9_1_temp of 2,500,000 faces in the FBX format	13074 0924	16-6- 2020 12:40	JA_Codebook.pdf	
JA_3Dmodel_BRB_JA_5E9_1_temp_2 500000f_OBJ.mtl	Mtl	additional file of OBJ file of BRB JA_5E9_1_temp	305	16-6- 2020 12:40	JA_Codebook.pdf	
JA_3Dmodel_BRB_JA_5E9_1_temp_2 500000f_OBJ.obj	Obj	3D model of BRB JA_5E9_1_temp of 2,500,000 faces in the OBJ format	26111 0342	16-6- 2020 12:40	JA_Codebook.pdf	

JA_3Dmodel_BRB_JA_5E9_1_temp_2500000f_PLY.ply	Ply	3D model of BRB JA_5E9_1_temp of 2,500,000 faces in the PLY format	152250605	16-6-2020 12:41	JA_Codebook.pdf	
JA_3Dmodel_BRB_JA_5E9_1_temp_2500000f_X3D.x3d	X3d	3D model of BRB JA_5E9_1_temp of 2,500,000 faces in the X3D format	142829592	16-6-2020 12:41	JA_Codebook.pdf	
JA_3Dmodel_FP_1_temp_100000f_BLEND.blend	Blend	3D model of FP 1_temp of 100,000 faces in the BLEND format	14654140	16-6-2020 12:41	JA_Codebook.pdf	
JA_3Dmodel_FP_1_temp_100000f_DAE.dae	Dae	3D model of FP 1_temp of 100,000 faces in the DAE format	17228376	16-6-2020 12:41	JA_Codebook.pdf	
JA_3Dmodel_FP_1_temp_100000f_FBX.fbx	Fbx	3D model of FP 1_temp of 100,000 faces in the FBX format	4347516	16-6-2020 12:41	JA_Codebook.pdf	
JA_3Dmodel_FP_1_temp_100000f_OBJ.mtl	Mtl	additional file of OBJ file of FP 1_temp	298	16-6-2020 12:41	JA_Codebook.pdf	
JA_3Dmodel_FP_1_temp_100000f_OBJ.obj	Obj	3D model of FP 1_temp of 100,000 faces in the OBJ format	11223211	16-6-2020 12:41	JA_Codebook.pdf	
JA_3Dmodel_FP_1_temp_100000f_PLY.ply	Ply	3D model of FP 1_temp of 100,000 faces in the PLY format	6293128	16-6-2020 12:41	JA_Codebook.pdf	
JA_3Dmodel_FP_1_temp_100000f_X3D.x3d	X3d	3D model of FP 1_temp of 100,000 faces in the X3D format	5455941	16-6-2020 12:41	JA_Codebook.pdf	

JA_3Dmodel_FP_1_temp_JPG.jpg	Jpg	Texture of FP 1_temp 3D model	28180 17	16-6- 2020 12:41		
JA_3Dmodel_FP_1_temp_2500000f_BLEND.blend	Blend	3D model of FP 1_temp of 2,500,000 faces in the BLEND format	28345 3860	16-6- 2020 12:41	JA_Codebook.pdf	
JA_3Dmodel_FP_1_temp_2500000f_DAE.dae	Dae	3D model of FP 1_temp of 2,500,000 faces in the DAE format	38399 7768	16-6- 2020 12:41	JA_Codebook.pdf	
JA_3Dmodel_FP_1_temp_2500000f_FBX.fbx	Fbx	3D model of FP 1_temp of 2,500,000 faces in the FBX format	12901 9196	16-6- 2020 12:41	JA_Codebook.pdf	
JA_3Dmodel_FP_1_temp_2500000f_OBJ.mtl	Mtl	additional file of OBJ file of FP 1_temp	299	16-6- 2020 12:41	JA_Codebook.pdf	
JA_3Dmodel_FP_1_temp_2500000f_OBJ.obj	Obj	3D model of FP 1_temp of 2,500,000 faces in the OBJ format	26124 6935	16-6- 2020 12:41	JA_Codebook.pdf	
JA_3Dmodel_FP_1_temp_2500000f_PLY.ply	Ply	3D model of FP 1_temp of 2,500,000 faces in the PLY format	15262 5393	16-6- 2020 12:41	JA_Codebook.pdf	
JA_3Dmodel_FP_1_temp_2500000f_X3D.x3d	X3d	3D model of FP 1_temp of 2,500,000 faces in the X3D format	14298 6398	16-6- 2020 12:42	JA_Codebook.pdf	
JA_3Dmodel_FP_34_100000f_BLEND.blend	Blend	3D model of FP 34 of 100,000 faces in the BLEND format	11835 384	16-6- 2020 12:42	JA_Codebook.pdf	

JA_3Dmodel_FP_34_100000f_DAE.dae	Dae	3D model of FP 34 of 100,000 faces in the DAE format	14755754	16-6-2020 12:42	JA_Codebook.pdf	
JA_3Dmodel_FP_34_100000f_FBX.fbx	Fbx	3D model of FP 34 of 100,000 faces in the FBX format	4160412	16-6-2020 12:42	JA_Codebook.pdf	
JA_3Dmodel_FP_34_100000f_OBJ.mtl	Mtl	additional file of OBJ file of FP 34	292	16-6-2020 12:42	JA_Codebook.pdf	
JA_3Dmodel_FP_34_100000f_OBJ.obj	Obj	3D model of FP 34 of 100,000 faces in the OBJ format	9298396	16-6-2020 12:42	JA_Codebook.pdf	
JA_3Dmodel_FP_34_100000f_PLY.ply	Ply	3D model of FP 34 of 100,000 faces in the PLY format	5844478	16-6-2020 12:42	JA_Codebook.pdf	
JA_3Dmodel_FP_34_100000f_X3D.x3d	X3d	3D model of FP 34 of 100,000 faces in the X3D format	9957843	16-6-2020 12:42	JA_Codebook.pdf	
JA_3Dmodel_FP_34_JPG.jpg	Jpg	Texture of FP 34 3D model	2422144	16-6-2020 12:42		
JA_3Dmodel_FP_34_2500000f_BLEND.blend	Blend	3D model of FP 34 of 2,500,000 faces in the BLEND format	280635104	16-6-2020 12:42	JA_Codebook.pdf	
JA_3Dmodel_FP_34_2500000f_DAE.dae	Dae	3D model of FP 34 of 2,500,000 faces in the DAE format	384097137	16-6-2020 12:42	JA_Codebook.pdf	

JA_3Dmodel_FP_34_2500000f_FBX.fb x	Fbx	3D model of FP 34 of 2,500,000 faces in the FBX format	11845 0860	16-6- 2020 12:42	JA_Codebook.pdf	
JA_3Dmodel_FP_34_2500000f_OBJ.m tl	Mtl	additional file of OBJ file of FP 34	293	16-6- 2020 12:42	JA_Codebook.pdf	
JA_3Dmodel_FP_34_2500000f_OBJ.ob j	Obj	3D model of FP 34 of 2,500,000 faces in the OBJ format	26147 0136	16-6- 2020 12:42	JA_Codebook.pdf	
JA_3Dmodel_FP_34_2500000f_PLY.pl y	Ply	3D model of FP 34 of 2,500,000 faces in the PLY format	15292 1731	16-6- 2020 12:42	JA_Codebook.pdf	
JA_3Dmodel_FP_34_2500000f_X3D.x3 d	X3d	3D model of FP 34 of 2,500,000 faces in the X3D format	14295 4958	16-6- 2020 12:43	JA_Codebook.pdf	
JA_3Dmodel_FP_85_100000f_BLEN d	Blend	3D model of FP 85 of 100,000 faces in the BLEND format	11834 488	16-6- 2020 12:43	JA_Codebook.pdf	
JA_3Dmodel_FP_85_100000f_DAE.d ae	Dae	3D model of FP 85 of 100,000 faces in the DAE format	14735 810	16-6- 2020 12:43	JA_Codebook.pdf	
JA_3Dmodel_FP_85_100000f_FBX.f bx	Fbx	3D model of FP 85 of 100,000 faces in the FBX format	41632 76	16-6- 2020 12:43	JA_Codebook.pdf	
JA_3Dmodel_FP_85_100000f_OBJ.m tl	Mtl	additional file of OBJ file of FP 85	358	16-6- 2020 12:43	JA_Codebook.pdf	

JA_3Dmodel_FP_85_100000f_OBJ.obj	Obj	3D model of FP 85 of 100,000 faces in the OBJ format	9286569	16-6-2020 12:43	JA_Codebook.pdf	
JA_3Dmodel_FP_85_100000f_PLY.ply	Ply	3D model of FP 85 of 100,000 faces in the PLY format	5822007	16-6-2020 12:43	JA_Codebook.pdf	
JA_3Dmodel_FP_85_100000f_X3D.x3d	X3d	3D model of FP 85 of 100,000 faces in the X3D format	9949702	16-6-2020 12:43	JA_Codebook.pdf	
JA_3Dmodel_FP_85_JPG.jpg	Jpg	Texture of FP 85 3D model	2386668	16-6-2020 12:43		
JA_3Dmodel_FP_85_2500000f_BLEND.blend	Blend	3D model of FP 85 of 2,500,000 faces in the BLEND format	280634208	16-6-2020 12:43	JA_Codebook.pdf	
JA_3Dmodel_FP_85_2500000f_DAE.dae	Dae	3D model of FP 85 of 2,500,000 faces in the DAE format	383560833	16-6-2020 12:43	JA_Codebook.pdf	
JA_3Dmodel_FP_85_2500000f_FBX.fbx	Fbx	3D model of FP 85 of 2,500,000 faces in the FBX format	120643916	16-6-2020 12:50	JA_Codebook.pdf	
JA_3Dmodel_FP_85_2500000f_OBJ.mtl	Mtl	additional file of OBJ file of FP 85	293	16-6-2020 12:51	JA_Codebook.pdf	
JA_3Dmodel_FP_85_2500000f_OBJ.obj	Obj	3D model of FP 85 of 2,500,000 faces in the OBJ format	261360376	16-6-2020 12:51	JA_Codebook.pdf	

JA_3Dmodel_FP_85_2500000f_PLY.ply	Ply	3D model of FP 85 of 2,500,000 faces in the PLY format	15271 3753	16-6- 2020 12:51	JA_Codebook.pdf	
JA_3Dmodel_FP_85_2500000f_X3D.x3d	X3d	3D model of FP 85 of 2,500,000 faces in the X3D format	14275 8078	16-6- 2020 12:51	JA_Codebook.pdf	
JA_3Dmodel_FP_JA_5E9_2_temp_100000f_BLEND.blend	Blend	3D model of FP JA_5E9_2_temp of 100,000 faces in the BLEND format	14970 660	16-6- 2020 12:52	JA_Codebook.pdf	
JA_3Dmodel_FP_JA_5E9_2_temp_100000f_DAE.dae	Dae	3D model of FP JA_5E9_2_temp of 100,000 faces in the DAE format	14730 201	16-6- 2020 12:52	JA_Codebook.pdf	
JA_3Dmodel_FP_JA_5E9_2_temp_100000f_FBX.fbx	Fbx	3D model of FP JA_5E9_2_temp of 100,000 faces in the FBX format	74307 80	16-6- 2020 12:52	JA_Codebook.pdf	
JA_3Dmodel_FP_JA_5E9_2_temp_100000f_OBJ.mtl	Mtl	additional file of OBJ file of FP JA_5E9_2_temp	303	16-6- 2020 12:52	JA_Codebook.pdf	
JA_3Dmodel_FP_JA_5E9_2_temp_100000f_OBJ.obj	Obj	3D model of FP JA_5E9_2_temp of 100,000 faces in the OBJ format	92837 61	16-6- 2020 12:52	JA_Codebook.pdf	
JA_3Dmodel_FP_JA_5E9_2_temp_100000f_PLY.ply	Ply	3D model of FP JA_5E9_2_temp of 100,000 faces in the PLY format	58109 33	16-6- 2020 12:52	JA_Codebook.pdf	
JA_3Dmodel_FP_JA_5E9_2_temp_100000f_X3D.x3d	X3d	3D model of FP JA_5E9_2_temp of 100,000 faces in the X3D format	54107 66	16-6- 2020 12:52		

JA_3Dmodel_FP_JA_5E9_2_JPG.jpg	Jpg	Texture of FP JA_5E9_2_temp 3D model	31342 98	16-6- 2020 12:52	JA_Codebook.pdf	
JA_3Dmodel_FP_JA_5E9_2_temp_250000f_BLEND.blend	Blend	3D model of FP JA_5E9_2_temp of 2,500,000 faces in the BLEND format	28377 0380	16-6- 2020 12:52	JA_Codebook.pdf	
JA_3Dmodel_FP_JA_5E9_2_temp_250000f_DAE.dae	Dae	3D model of FP JA_5E9_2_temp of 2,500,000 faces in the DAE format	38321 5201	16-6- 2020 12:52	JA_Codebook.pdf	
JA_3Dmodel_FP_JA_5E9_2_temp_250000f_FBX.fbx	Fbx	3D model of FP JA_5E9_2_temp of 2,500,000 faces in the FBX format	12983 2748	16-6- 2020 12:52	JA_Codebook.pdf	
JA_3Dmodel_FP_JA_5E9_2_temp_250000f_OBJ.mtl	Mtl	additional file of OBJ file of FP JA_5E9_2_temp	304	16-6- 2020 12:52	JA_Codebook.pdf	
JA_3Dmodel_FP_JA_5E9_2_temp_250000f_OBJ.obj	Obj	3D model of FP JA_5E9_2_temp of 2,500,000 faces in the OBJ format	26134 5198	16-6- 2020 12:52	JA_Codebook.pdf	
JA_3Dmodel_FP_JA_5E9_2_temp_250000f_PLY.ply	Ply	3D model of FP JA_5E9_2_temp of 2,500,000 faces in the PLY format	15270 3258	16-6- 2020 12:52	JA_Codebook.pdf	
JA_3Dmodel_FP_JA_5E9_2_temp_250000f_X3D.x3d	X3d	3D model of FP JA_5E9_2_temp of 2,500,000 faces in the X3D format	14274 4921	16-6- 2020 12:53		
JA_3Dmodel_FP_JA_DD_385_28_10000f_BLEND.blend	Blend	3D model of FP JA_DD_385_28 of 100,000 faces in the BLEND format	28063 6036	16-6- 2020 12:50	JA_Codebook.pdf	

JA_3Dmodel_FP_JA_DD_385_28_10000f_DAE.dae	Dae	3D model of FP JA_DD_385_28 of 100,000 faces in the DAE format	38343 3671	16-6-2020 12:50	JA_Codebook.pdf	
JA_3Dmodel_FP_JA_DD_385_28_10000f_FBX.fbx	Fbx	3D model of FP JA_DD_385_28 of 100,000 faces in the FBX format	43097 72	16-6-2020 12:58	JA_Codebook.pdf	
JA_3Dmodel_FP_JA_DD_385_28_10000f_OBJ.mtl	Mtl	additional file of OBJ file of FP JA_DD_385_28	303	16-6-2020 12:58	JA_Codebook.pdf	
JA_3Dmodel_FP_JA_DD_385_28_10000f_OBJ.obj	Obj	3D model of FP JA_DD_385_28 of 100,000 faces in the OBJ format	93305 31	16-6-2020 12:58	JA_Codebook.pdf	
JA_3Dmodel_FP_JA_DD_385_28_10000f_PLY.ply	Ply	3D model of FP JA_DD_385_28 of 100,000 faces in the PLY format	59363 51	16-6-2020 12:58	JA_Codebook.pdf	
JA_3Dmodel_FP_JA_DD_385_28_10000f_X3D.x3d	X3d	3D model of FP JA_DD_385_28 of 100,000 faces in the X3D format	99499 40	16-6-2020 12:58	JA_Codebook.pdf	
JA_3Dmodel_FP_JA_DD_385_28_JPG.jpg	Jpg	Texture of FP JA_DD_385_28 3D model	25388 54	16-6-2020 12:50		
JA_3Dmodel_FP_JA_DD_385_28_250000f_BLEND.blend	Blend	3D model of FP JA_DD_385_28 of 2,500,000 faces in the BLEND format	28063 5524	16-6-2020 12:58	JA_Codebook.pdf	
JA_3Dmodel_FP_JA_DD_385_28_250000f_DAE.dae	Dae	3D model of FP JA_DD_385_28 of 2,500,000 faces in the DAE format	38343 3671	16-6-2020 12:58	JA_Codebook.pdf	

JA_3Dmodel_FP_JA_DD_385_28_2500000f_FBX.fbx	Fbx	3D model of FP JA_DD_385_28 of 2,500,000 faces in the FBX format	12959 5436	16-6-2020 12:58	JA_Codebook.pdf	
JA_3Dmodel_FP_JA_DD_385_28_2500000f_OBJ.mtl	Mtl	additional file of OBJ file of FP JA_DD_385_28	303	16-6-2020 12:58	JA_Codebook.pdf	
JA_3Dmodel_FP_JA_DD_385_28_2500000f_OBJ.obj	Obj	3D model of FP JA_DD_385_28 of 2,500,000 faces in the OBJ format	26158 6995	16-6-2020 12:58	JA_Codebook.pdf	
JA_3Dmodel_FP_JA_DD_385_28_2500000f_PLY.ply	Ply	3D model of FP JA_DD_385_28 of 2,500,000 faces in the PLY format	15325 9408	16-6-2020 12:58	JA_Codebook.pdf	
JA_3Dmodel_FP_JA_DD_385_28_2500000f_X3D.x3d	X3d	3D model of FP JA_DD_385_28 of 2,500,000 faces in the X3D format	14324 1289	16-6-2020 12:58	JA_Codebook.pdf	
JA_3Dmodel_FP_JA_DD_385_30_100000f_BLEND.blend	Blend	3D model of FP JA_DD_385_30 of 100,000 faces in the BLEND format	11836 624	16-6-2020 12:58	JA_Codebook.pdf	
JA_3Dmodel_FP_JA_DD_385_30_100000f_DAE.dae	Dae	3D model of FP JA_DD_385_30 of 100,000 faces in the DAE format	14758 988	16-6-2020 12:58	JA_Codebook.pdf	
JA_3Dmodel_FP_JA_DD_385_30_100000f_FBX.fbx	Fbx	3D model of FP JA_DD_385_30 of 100,000 faces in the FBX format	42747 64	16-6-2020 12:58	JA_Codebook.pdf	
JA_3Dmodel_FP_JA_DD_385_30_100000f_OBJ.mtl	Mtl	additional file of OBJ file of FP JA_DD_385_30	302	16-6-2020 12:58	JA_Codebook.pdf	

JA_3Dmodel_FP_JA_DD_385_30_100000f_OBJ.obj	Obj	3D model of FP JA_DD_385_30 of 100,000 faces in the OBJ format	9332234	16-6-2020 12:58	JA_Codebook.pdf	
JA_3Dmodel_FP_JA_DD_385_30_100000f_PLY.ply	Ply	3D model of FP JA_DD_385_30 of 100,000 faces in the PLY format	5947495	16-6-2020 12:58	JA_Codebook.pdf	
JA_3Dmodel_FP_JA_DD_385_30_100000f_X3D.x3d	X3d	3D model of FP JA_DD_385_30 of 100,000 faces in the X3D format	9950678	16-6-2020 12:58	JA_Codebook.pdf	
JA_3Dmodel_FP_JA_DD_385_30_JPG.jpg	Jpg	Texture of FP JA_DD_385_30 3D model	2766063	16-6-2020 12:58		
JA_3Dmodel_FP_JA_DD_385_30_250000f_BLEND.blend	Blend	3D model of FP JA_DD_385_30 of 2,500,000 faces in the BLEND format	280636344	16-6-2020 12:58	JA_Codebook.pdf	
JA_3Dmodel_FP_JA_DD_385_30_250000f_DAE.dae	Dae	3D model of FP JA_DD_385_30 of 2,500,000 faces in the DAE format	384290839	16-6-2020 12:59	JA_Codebook.pdf	
JA_3Dmodel_FP_JA_DD_385_30_250000f_FBX.fbx	Fbx	3D model of FP JA_DD_385_30 of 2,500,000 faces in the FBX format	127812636	16-6-2020 12:59	JA_Codebook.pdf	
JA_3Dmodel_FP_JA_DD_385_30_250000f_OBJ.mtl	Mtl	additional file of OBJ file of FP JA_DD_385_30	303	16-6-2020 12:59	JA_Codebook.pdf	
JA_3Dmodel_FP_JA_DD_385_30_250000f_OBJ.obj	Obj	3D model of FP JA_DD_385_30 of 2,500,000 faces in the OBJ format	261557054	16-6-2020 12:59	JA_Codebook.pdf	

JA_3Dmodel_FP_JA_DD_385_30_2500 000f_PLY.ply	Ply	3D model of FP JA_DD_385_30 of 2,500,000 faces in the PLY format	15327 0622	16-6- 2020 12:59	JA_Codebook.pdf	
JA_3Dmodel_FP_JA_DD_385_30_2500 000f_X3D.x3d	X3d	3D model of FP JA_DD_385_30 of 2,500,000 faces in the X3D format	14326 3554	16-6- 2020 12:59	JA_Codebook.pdf	
JA_3Dmodel_FP_JA_DD_385_31_86_1 00000f_BLEND.blend	Blend	3D model of FP JA_DD_385_31_86 of 100,000 faces in the BLEND format	12936 872	16-6- 2020 12:59	JA_Codebook.pdf	
JA_3Dmodel_FP_JA_DD_385_31_86_1 00000f_DAE.dae	Dae	3D model of FP JA_DD_385_31_86 of 100,000 faces in the DAE format	12335 996	16-6- 2020 12:59	JA_Codebook.pdf	
JA_3Dmodel_FP_JA_DD_385_31_86_1 00000f_FBX.fbx	Fbx	3D model of FP JA_DD_385_31_86 of 100,000 faces in the FBX format	35473 88	16-6- 2020 12:59	JA_Codebook.pdf	
JA_3Dmodel_FP_JA_DD_385_31_86_1 00000f_OBJ.mtl	Mtl	additional file of OBJ file of FP JA_DD_385_31_86	305	16-6- 2020 12:59	JA_Codebook.pdf	
JA_3Dmodel_FP_JA_DD_385_31_86_1 00000f_OBJ.obj	Obj	3D model of FP JA_DD_385_31_86 of 100,000 faces in the OBJ format	77659 47	16-6- 2020 12:59	JA_Codebook.pdf	
JA_3Dmodel_FP_JA_DD_385_31_86_1 00000f_PLY.ply	Ply	3D model of FP JA_DD_385_31_86 of 100,000 faces in the PLY format	48760 54	16-6- 2020 12:59	JA_Codebook.pdf	
JA_3Dmodel_FP_JA_DD_385_31_86_1 00000f_X3D.x3d	X3d	3D model of FP JA_DD_385_31_86 of 100,000 faces in the X3D format	83267 40	16-6- 2020 12:59	JA_Codebook.pdf	

JA_3Dmodel_FP_JA_DD_385_31_86_JPG.jpg	Jpg	Texture of FP JA_DD_385_31_86 3D model	29014 29	16-6- 2020 12:59		
JA_3Dmodel_FP_JA_DD_385_31_86_2100000f_BLEND.blend	Blend	3D model of FP JA_DD_385_31_86 of 2,100,000 faces in the BLEND format	24115 7408	16-6- 2020 17:02	JA_Codebook.pdf	Contains only 2,100,000 faces
JA_3Dmodel_FP_JA_DD_385_31_86_2100000f_DAE.dae	Dae	3D model of FP JA_DD_385_31_86 of 2,100,000 faces in the DAE format	31985 9465	16-6- 2020 13:00	JA_Codebook.pdf	Contains only 2,100,000 faces
JA_3Dmodel_FP_JA_DD_385_31_86_2100000f_FBX.fbx	Fbx	3D model of FP JA_DD_385_31_86 of 2,100,000 faces in the FBX format	11074 2396	16-6- 2020 13:00	JA_Codebook.pdf	Contains only 2,100,000 faces
JA_3Dmodel_FP_JA_DD_385_31_86_2100000f_OBJ.mtl	Mtl	additional file of OBJ file of FP JA_DD_385_31_86	306	16-6- 2020 13:00	JA_Codebook.pdf	
JA_3Dmodel_FP_JA_DD_385_31_86_2100000f_OBJ.obj	Obj	3D model of FP JA_DD_385_31_86 of 2,100,000 faces in the OBJ format	21614 3909	16-6- 2020 13:00	JA_Codebook.pdf	Contains only 2,100,000 faces
JA_3Dmodel_FP_JA_DD_385_31_86_2100000f_PLY.ply	Ply	3D model of FP JA_DD_385_31_86 of 2,100,000 faces in the PLY format	12711 4400	16-6- 2020 13:00	JA_Codebook.pdf	Contains only 2,100,000 faces
JA_3Dmodel_FP_JA_DD_385_31_86_2100000f_X3D.x3d	X3d	3D model of FP JA_DD_385_31_86 of 2,100,000 faces in the X3D format	11885 0478	16-6- 2020 13:00	JA_Codebook.pdf	Contains only 2,100,000 faces
JA_3Dmodel_FP_JA_DD_385_32_100000f_BLEND.blend	Blend	3D model of FP JA_DD_385_32 of 100,000 faces in the BLEND format	11835 264	16-6- 2020 13:00	JA_Codebook.pdf	

JA_3Dmodel_FP_JA_DD_385_32_10000f_DAE.dae	Dae	3D model of FP JA_DD_385_32 of 100,000 faces in the DAE format	14753 980	16-6-2020 13:00	JA_Codebook.pdf	
JA_3Dmodel_FP_JA_DD_385_32_10000f_FBX.fbx	Fbx	3D model of FP JA_DD_385_32 of 100,000 faces in the FBX format	43244 28	16-6-2020 13:00	JA_Codebook.pdf	
JA_3Dmodel_FP_JA_DD_385_32_10000f_OBJ.mtl	Mtl	additional file of OBJ file of FP JA_DD_385_32	302	16-6-2020 13:00	JA_Codebook.pdf	
JA_3Dmodel_FP_JA_DD_385_32_10000f_OBJ.obj	Obj	3D model of FP JA_DD_385_32 of 100,000 faces in the OBJ format	92870 54	16-6-2020 13:00	JA_Codebook.pdf	
JA_3Dmodel_FP_JA_DD_385_32_10000f_PLY.ply	Ply	3D model of FP JA_DD_385_32 of 100,000 faces in the PLY format	58140 43	16-6-2020 13:00	JA_Codebook.pdf	
JA_3Dmodel_FP_JA_DD_385_32_10000f_X3D.x3d	X3d	3D model of FP JA_DD_385_32 of 100,000 faces in the X3D format	99453 30	16-6-2020 13:00	JA_Codebook.pdf	
JA_3Dmodel_FP_JA_DD_385_32_JPG.jpg	Jpg	Texture of FP JA_DD_385_32 3D model	36372 87	16-6-2020 13:00		
JA_3Dmodel_FP_JA_DD_385_32_250000f_BLEND.blend	Blend	3D model of FP JA_DD_385_32 of 2,500,000 faces in the BLEND format	28063 4984	16-6-2020 13:00	JA_Codebook.pdf	
JA_3Dmodel_FP_JA_DD_385_32_250000f_DAE.dae	Dae	3D model of FP JA_DD_385_32 of 2,500,000 faces in the DAE format	38405 1150	16-6-2020 13:00	JA_Codebook.pdf	

JA_3Dmodel_FP_JA_DD_385_32_2500000f_FBX.fbx	Fbx	3D model of FP JA_DD_385_32 of 2,500,000 faces in the FBX format	12602 3596	16-6-2020 13:01	JA_Codebook.pdf	
JA_3Dmodel_FP_JA_DD_385_32_2500000f_OBJ.mtl	Mtl	additional file of OBJ file of FP JA_DD_385_32	303	16-6-2020 13:01	JA_Codebook.pdf	
JA_3Dmodel_FP_JA_DD_385_32_2500000f_OBJ.obj	Obj	3D model of FP JA_DD_385_32 of 2,500,000 faces in the OBJ format	26132 3464	16-6-2020 13:01	JA_Codebook.pdf	
JA_3Dmodel_FP_JA_DD_385_32_2500000f_PLY.ply	Ply	3D model of FP JA_DD_385_32 of 2,500,000 faces in the PLY format	15268 5852	16-6-2020 13:01	JA_Codebook.pdf	
JA_3Dmodel_FP_JA_DD_385_32_2500000f_X3D.x3d	X3d	3D model of FP JA_DD_385_32 of 2,500,000 faces in the X3D format	14269 1533	16-6-2020 13:01	JA_Codebook.pdf	
JA_3Dmodel_FP_JA_DD_385_35_100000f_BLEND.blend	Blend	3D model of FP JA_DD_385_35 of 100,000 faces in the BLEND format	11836 916	16-6-2020 13:01	JA_Codebook.pdf	
JA_3Dmodel_FP_JA_DD_385_35_100000f_DAE.dae	Dae	3D model of FP JA_DD_385_35 of 100,000 faces in the DAE format	14739 824	16-6-2020 13:01	JA_Codebook.pdf	
JA_3Dmodel_FP_JA_DD_385_35_100000f_FBX.fbx	Fbx	3D model of FP JA_DD_385_35 of 100,000 faces in the FBX format	42122 04	16-6-2020 13:01	JA_Codebook.pdf	
JA_3Dmodel_FP_JA_DD_385_35_100000f_OBJ.mtl	Mtl	additional file of OBJ file of FP JA_DD_385_35	302	16-6-2020 13:01	JA_Codebook.pdf	

JA_3Dmodel_FP_JA_DD_385_35_10000f_OBJ.obj	Obj	3D model of FP JA_DD_385_35 of 100,000 faces in the OBJ format	9263484	16-6-202013:01	JA_Codebook.pdf	
JA_3Dmodel_FP_JA_DD_385_35_10000f_PLY.ply	Ply	3D model of FP JA_DD_385_35 of 100,000 faces in the PLY format	5795035	16-6-202013:01	JA_Codebook.pdf	
JA_3Dmodel_FP_JA_DD_385_35_10000f_X3D.x3d	X3d	3D model of FP JA_DD_385_35 of 100,000 faces in the X3D format	9953284	16-6-202013:01	JA_Codebook.pdf	
JA_3Dmodel_FP_JA_DD_385_35_JPG.jpg	Jpg	Texture of FP JA_DD_385_35 3D model	2462246	16-6-202013:01		
JA_3Dmodel_FP_JA_DD_385_35_250000f_BLEND.blend	Blend	3D model of FP JA_DD_385_35 of 2,500,000 faces in the BLEND format	280640124	16-6-202013:01	JA_Codebook.pdf	
JA_3Dmodel_FP_JA_DD_385_35_250000f_DAE.dae	Dae	3D model of FP JA_DD_385_35 of 2,500,000 faces in the DAE format	383575189	16-6-202012:54	JA_Codebook.pdf	
JA_3Dmodel_FP_JA_DD_385_35_250000f_FBX.fbx	Fbx	3D model of FP JA_DD_385_35 of 2,500,000 faces in the FBX format	105085148	16-6-202012:54	JA_Codebook.pdf	
JA_3Dmodel_FP_JA_DD_385_35_250000f_OBJ.mtl	Mtl	additional file of OBJ file of FP JA_DD_385_35	303	16-6-202012:54	JA_Codebook.pdf	
JA_3Dmodel_FP_JA_DD_385_35_250000f_OBJ.obj	Obj	3D model of FP JA_DD_385_35 of 2,500,000 faces in the OBJ format	260632388	16-6-202012:54	JA_Codebook.pdf	

JA_3Dmodel_FP_JA_DD_385_35_2500000f_PLY.ply	Ply	3D model of FP JA_DD_385_35 of 2,500,000 faces in the PLY format	152080749	16-6-2020 12:55	JA_Codebook.pdf	
JA_3Dmodel_FP_JA_DD_385_35_2500000f_X3D.x3d	X3d	3D model of FP JA_DD_385_35 of 2,500,000 faces in the X3D format	142670611	16-6-2020 12:55	JA_Codebook.pdf	
JA_3Dmodel_FP_JA_DD_385_41_100000f_BLEND.blend	Blend	3D model of FP JA_DD_385_41 of 100,000 faces in the BLEND format	11836352	16-6-2020 12:55	JA_Codebook.pdf	
JA_3Dmodel_FP_JA_DD_385_41_100000f_DAE.dae	Dae	3D model of FP JA_DD_385_41 of 100,000 faces in the DAE format	14757152	16-6-2020 12:55	JA_Codebook.pdf	
JA_3Dmodel_FP_JA_DD_385_41_100000f_FBX.fbx	Fbx	3D model of FP JA_DD_385_41 of 100,000 faces in the FBX format	4218444	16-6-2020 12:55	JA_Codebook.pdf	
JA_3Dmodel_FP_JA_DD_385_41_100000f_OBJ.mtl	Mtl	additional file of OBJ file of FP JA_DD_385_41	302	16-6-2020 12:55	JA_Codebook.pdf	
JA_3Dmodel_FP_JA_DD_385_41_100000f_OBJ.obj	Obj	3D model of FP JA_DD_385_41 of 100,000 faces in the OBJ format	9300406	16-6-2020 12:55	JA_Codebook.pdf	
JA_3Dmodel_FP_JA_DD_385_41_100000f_PLY.ply	Ply	3D model of FP JA_DD_385_41 of 100,000 faces in the PLY format	5865752	16-6-2020 12:55	JA_Codebook.pdf	
JA_3Dmodel_FP_JA_DD_385_41_100000f_X3D.x3d	X3d	3D model of FP JA_DD_385_41 of 100,000 faces in the X3D format	5464568	16-6-2020 12:55	JA_Codebook.pdf	

JA_3Dmodel_FP_JA_DD_385_41_JPG.jpg	Jpg	Texture of FP JA_DD_385_41 3D model	2712631	16-6-2020 12:55		
JA_3Dmodel_FP_JA_DD_385_41_2500000f_BLEND.blend	Blend	3D model of FP JA_DD_385_41 of 2,500,000 faces in the BLEND format	280636072	16-6-2020 12:56	JA_Codebook.pdf	
JA_3Dmodel_FP_JA_DD_385_41_2500000f_DAE.dae	Dae	3D model of FP JA_DD_385_41 of 2,500,000 faces in the DAE format	384300622	16-6-2020 12:55	JA_Codebook.pdf	
JA_3Dmodel_FP_JA_DD_385_41_2500000f_FBX.fbx	Fbx	3D model of FP JA_DD_385_41 of 2,500,000 faces in the FBX format	112898908	16-6-2020 12:55	JA_Codebook.pdf	
JA_3Dmodel_FP_JA_DD_385_41_2500000f_OBJ.mtl	Mtl	additional file of OBJ file of FP JA_DD_385_41	303	16-6-2020 12:56	JA_Codebook.pdf	
JA_3Dmodel_FP_JA_DD_385_41_2500000f_OBJ.obj	Obj	3D model of FP JA_DD_385_41 of 2,500,000 faces in the OBJ format	26141894	16-6-2020 12:56	JA_Codebook.pdf	
JA_3Dmodel_FP_JA_DD_385_41_2500000f_PLY.ply	Ply	3D model of FP JA_DD_385_41 of 2,500,000 faces in the PLY format	152818715	16-6-2020 12:55	JA_Codebook.pdf	
JA_3Dmodel_FP_JA_DD_385_41_2500000f_X3D.x3d	X3d	3D model of FP JA_DD_385_41 of 2,500,000 faces in the X3D format	142949909	16-6-2020 12:56	JA_Codebook.pdf	
JA_3Dmodel_FP_JA_DD_385_42_100000f_BLEND.blend	Blend	3D model of FP JA_DD_385_42 of 100,000 faces in the BLEND format	11840612	16-6-2020 12:56	JA_Codebook.pdf	

JA_3Dmodel_FP_JA_DD_385_42_10000f_DAE.dae	Dae	3D model of FP JA_DD_385_42 of 100,000 faces in the DAE format	14514 149	16-6-2020 12:56	JA_Codebook.pdf	
JA_3Dmodel_FP_JA_DD_385_42_10000f_FBX.fbx	Fbx	3D model of FP JA_DD_385_42 of 100,000 faces in the FBX format	42972 28	16-6-2020 12:56	JA_Codebook.pdf	
JA_3Dmodel_FP_JA_DD_385_42_10000f_OBJ.mtl	Mtl	additional file of OBJ file of FP JA_DD_385_42	302	16-6-2020 12:56	JA_Codebook.pdf	
JA_3Dmodel_FP_JA_DD_385_42_10000f_OBJ.obj	Obj	3D model of FP JA_DD_385_42 of 100,000 faces in the OBJ format	93210 14	16-6-2020 12:56	JA_Codebook.pdf	
JA_3Dmodel_FP_JA_DD_385_42_10000f_PLY.ply	Ply	3D model of FP JA_DD_385_42 of 100,000 faces in the PLY format	58801 65	16-6-2020 12:56	JA_Codebook.pdf	
JA_3Dmodel_FP_JA_DD_385_42_10000f_X3D.x3d	X3d	3D model of FP JA_DD_385_42 of 100,000 faces in the X3D format	99561 26	16-6-2020 12:56	JA_Codebook.pdf	
JA_3Dmodel_FP_JA_DD_385_42_JPG.jpg	Jpg	Texture of FP JA_DD_385_42 3D model	20928 43	16-6-2020 12:56		
JA_3Dmodel_FP_JA_DD_385_42_250000f_BLEND.blend	Blend	3D model of FP JA_DD_385_42 of 2,500,000 faces in the BLEND format	28064 7052	16-6-2020 12:56	JA_Codebook.pdf	
JA_3Dmodel_FP_JA_DD_385_42_250000f_DAE.dae	Dae	3D model of FP JA_DD_385_42 of 2,500,000 faces in the DAE format	37772 9465	16-6-2020 12:56	JA_Codebook.pdf	

JA_3Dmodel_FP_JA_DD_385_42_2500000f_FBX.fbx	Fbx	3D model of FP JA_DD_385_42 of 2,500,000 faces in the FBX format	133813900	16-6-2020 21:45	JA_Codebook.pdf	
JA_3Dmodel_FP_JA_DD_385_42_2500000f_OBJ.mtl	Mtl	additional file of OBJ file of FP JA_DD_385_42	303	16-6-2020 12:57	JA_Codebook.pdf	
JA_3Dmodel_FP_JA_DD_385_42_2500000f_OBJ.obj	Obj	3D model of FP JA_DD_385_42 of 2,500,000 faces in the OBJ format	261530492	16-6-2020 12:57	JA_Codebook.pdf	
JA_3Dmodel_FP_JA_DD_385_42_2500000f_PLY.ply	Ply	3D model of FP JA_DD_385_42 of 2,500,000 faces in the PLY format	152897425	16-6-2020 12:57	JA_Codebook.pdf	
JA_3Dmodel_FP_JA_DD_385_42_2500000f_X3D.x3d	X3d	3D model of FP JA_DD_385_42 of 2,500,000 faces in the X3D format	142927993	16-6-2020 12:20	JA_Codebook.pdf	
JA_3Dmodel_FP_JA_DD_385_44_100000f_BLEND.blend	Blend	3D model of FP JA_DD_385_44 of 100,000 faces in the BLEND format	9595064	16-6-2020 12:57	JA_Codebook.pdf	
JA_3Dmodel_FP_JA_DD_385_44_100000f_DAE.dae	Dae	3D model of FP JA_DD_385_44 of 100,000 faces in the DAE format	11747683	16-6-2020 12:57	JA_Codebook.pdf	
JA_3Dmodel_FP_JA_DD_385_44_100000f_FBX.fbx	Fbx	3D model of FP JA_DD_385_44 of 100,000 faces in the FBX format	3327180	16-6-2020 12:57	JA_Codebook.pdf	
JA_3Dmodel_FP_JA_DD_385_44_100000f_OBJ.mtl	Mtl	additional file of OBJ file of FP JA_DD_385_44	302	16-6-2020 12:57	JA_Codebook.pdf	

JA_3Dmodel_FP_JA_DD_385_44_100000f_OBJ.obj	Obj	3D model of FP JA_DD_385_44 of 100,000 faces in the OBJ format	7409137	16-6-2020 12:57	JA_Codebook.pdf	
JA_3Dmodel_FP_JA_DD_385_44_100000f_PLY.ply	Ply	3D model of FP JA_DD_385_44 of 100,000 faces in the PLY format	4704461	16-6-2020 12:57	JA_Codebook.pdf	
JA_3Dmodel_FP_JA_DD_385_44_100000f_X3D.x3d	X3d	3D model of FP JA_DD_385_44 of 100,000 faces in the X3D format	4386410	16-6-2020 12:57	JA_Codebook.pdf	
JA_3Dmodel_FP_JA_DD_385_44_JPG.jpg	Jpg	Texture of FP JA_DD_385_44 3D model	2601386	16-6-2020 12:57		
JA_3Dmodel_FP_JA_DD_385_44_200000f_BLEND.blend	Blend	3D model of FP JA_DD_385_44 of 2,000,000 faces in the BLEND format	224634784	16-6-2020 12:57	JA_Codebook.pdf	Contains only 2,000,000 faces
JA_3Dmodel_FP_JA_DD_385_44_200000f_DAE.dae	Dae	3D model of FP JA_DD_385_44 of 2,000,000 faces in the DAE format	304241888	16-6-2020 12:57	JA_Codebook.pdf	Contains only 2,000,000 faces
JA_3Dmodel_FP_JA_DD_385_44_200000f_FBX.fbx	Fbx	3D model of FP JA_DD_385_44 of 2,000,000 faces in the FBX format	89529836	16-6-2020 12:57	JA_Codebook.pdf	Contains only 2,000,000 faces
JA_3Dmodel_FP_JA_DD_385_44_200000f_OBJ.mtl	Mtl	additional file of OBJ file of FP JA_DD_385_44	303	16-6-2020 12:57	JA_Codebook.pdf	
JA_3Dmodel_FP_JA_DD_385_44_200000f_OBJ.obj	Obj	3D model of FP JA_DD_385_44 of 2,000,000 faces in the OBJ format	205218129	16-6-2020 12:57	JA_Codebook.pdf	Contains only 2,000,000 faces

JA_3Dmodel_FP_JA_DD_385_44_2000000f_PLY.ply	Ply	3D model of FP JA_DD_385_44 of 2,000,000 faces in the PLY format	12110 1199	16-6-2020 13:05	JA_Codebook.pdf	Contains only 2,000,000 faces
JA_3Dmodel_FP_JA_DD_385_44_2000000f_X3D.x3d	X3d	3D model of FP JA_DD_385_44 of 2,000,000 faces in the X3D format	11316 6594	16-6-2020 13:05	JA_Codebook.pdf	Contains only 2,000,000 faces
JA_3Dmodel_FP_JA_DD_385_45_100000f_BLEND.blend	Blend	3D model of FP JA_DD_385_45 of 100,000 faces in the BLEND format	11834 984	16-6-2020 13:05	JA_Codebook.pdf	
JA_3Dmodel_FP_JA_DD_385_45_100000f_DAE.dae	Dae	3D model of FP JA_DD_385_45 of 100,000 faces in the DAE format	14742 118	16-6-2020 13:05	JA_Codebook.pdf	
JA_3Dmodel_FP_JA_DD_385_45_100000f_FBX.fbx	Fbx	3D model of FP JA_DD_385_45 of 100,000 faces in the FBX format	42707 80	16-6-2020 13:05	JA_Codebook.pdf	
JA_3Dmodel_FP_JA_DD_385_45_100000f_OBJ.mtl	Mtl	additional file of OBJ file of FP JA_DD_385_45	302	16-6-2020 13:05	JA_Codebook.pdf	
JA_3Dmodel_FP_JA_DD_385_45_100000f_OBJ.obj	Obj	3D model of FP JA_DD_385_45 of 100,000 faces in the OBJ format	92969 29	16-6-2020 13:05	JA_Codebook.pdf	
JA_3Dmodel_FP_JA_DD_385_45_100000f_PLY.ply	Ply	3D model of FP JA_DD_385_45 of 100,000 faces in the PLY format	58734 90	16-6-2020 13:05	JA_Codebook.pdf	
JA_3Dmodel_FP_JA_DD_385_45_100000f_X3D.x3d	X3d	3D model of FP JA_DD_385_45 of 100,000 faces in the X3D format	99578 48	16-6-2020 13:05	JA_Codebook.pdf	

JA_3Dmodel_FP_JA_DD_385_45_JPG.jpg	Jpg	Texture of FP JA_DD_385_45 3D model	25889 95	16-6- 2020 13:05		
JA_3Dmodel_FP_JA_DD_385_45_1000000f_BLEND.blend	Blend	3D model of FP JA_DD_385_45 of 1,000,000 faces in the BLEND format	11263 4704	16-6- 2020 13:05	JA_Codebook.pdf	Contains only 1,000,000 faces
JA_3Dmodel_FP_JA_DD_385_45_1000000f_DAE.dae	Dae	3D model of FP JA_DD_385_45 of 1,000,000 faces in the DAE format	15085 3364	16-6- 2020 13:05	JA_Codebook.pdf	Contains only 1,000,000 faces
JA_3Dmodel_FP_JA_DD_385_45_1000000f_FBX.fbx	Fbx	3D model of FP JA_DD_385_45 of 1,000,000 faces in the FBX format	47525 116	16-6- 2020 13:05	JA_Codebook.pdf	Contains only 1,000,000 faces
JA_3Dmodel_FP_JA_DD_385_45_1000000f_OBJ.mtl	Mtl	additional file of OBJ file of FP JA_DD_385_45	303	16-6- 2020 13:05	JA_Codebook.pdf	
JA_3Dmodel_FP_JA_DD_385_45_1000000f_OBJ.obj	Obj	3D model of FP JA_DD_385_45 of 1,000,000 faces in the OBJ format	10157 5474	16-6- 2020 13:05	JA_Codebook.pdf	Contains only 1,000,000 faces
JA_3Dmodel_FP_JA_DD_385_45_1000000f_PLY.ply	Ply	3D model of FP JA_DD_385_45 of 1,000,000 faces in the PLY format	60396 693	16-6- 2020 13:05	JA_Codebook.pdf	Contains only 1,000,000 faces
JA_3Dmodel_FP_JA_DD_385_45_1000000f_X3D.x3d	X3d	3D model of FP JA_DD_385_45 of 1,000,000 faces in the X3D format	56412 582	16-6- 2020 13:05	JA_Codebook.pdf	Contains only 1,000,000 faces
JA_3Dmodel_FP_JA_DD_385_73_100000f_BLEND.blend	Blend	3D model of FP JA_DD_385_73 of 100,000 faces in the BLEND format	11819 340	16-6- 2020 13:05	JA_Codebook.pdf	

JA_3Dmodel_FP_JA_DD_385_73_10000f_DAE.dae	Dae	3D model of FP JA_DD_385_73 of 100,000 faces in the DAE format	14765 164	16-6-2020 13:05	JA_Codebook.pdf	
JA_3Dmodel_FP_JA_DD_385_73_10000f_FBX.fbx	Fbx	3D model of FP JA_DD_385_73 of 100,000 faces in the FBX format	40703 64	16-6-2020 13:05	JA_Codebook.pdf	
JA_3Dmodel_FP_JA_DD_385_73_10000f_OBJ.mtl	Mtl	additional file of OBJ file of FP JA_DD_385_73	302	16-6-2020 13:05	JA_Codebook.pdf	
JA_3Dmodel_FP_JA_DD_385_73_10000f_OBJ.obj	Obj	3D model of FP JA_DD_385_73 of 100,000 faces in the OBJ format	92999 86	16-6-2020 13:05	JA_Codebook.pdf	
JA_3Dmodel_FP_JA_DD_385_73_10000f_PLY.ply	Ply	3D model of FP JA_DD_385_73 of 100,000 faces in the PLY format	58539 19	16-6-2020 13:05	JA_Codebook.pdf	
JA_3Dmodel_FP_JA_DD_385_73_10000f_X3D.x3d	X3d	3D model of FP JA_DD_385_73 of 100,000 faces in the X3D format	54588 70	16-6-2020 13:05	JA_Codebook.pdf	
JA_3Dmodel_FP_JA_DD_385_73_JPG.jpg	Jpg	Texture of FP JA_DD_385_73 3D model	25195 84	16-6-2020 13:05		
JA_3Dmodel_FP_JA_DD_385_73_250000f_BLEND.blend	Blend	3D model of FP JA_DD_385_73 of 2,500,000 faces in the BLEND format	28063 8772	16-6-2020 13:05	JA_Codebook.pdf	
JA_3Dmodel_FP_JA_DD_385_73_250000f_DAE.dae	Dae	3D model of FP JA_DD_385_73 of 2,500,000 faces in the DAE format	38418 8114	16-6-2020 13:05	JA_Codebook.pdf	

JA_3Dmodel_FP_JA_DD_385_73_2500000f_FBX.fbx	Fbx	3D model of FP JA_DD_385_73 of 2,500,000 faces in the FBX format	10844 9580	16-6-2020 13:06	JA_Codebook.pdf	
JA_3Dmodel_FP_JA_DD_385_73_2500000f_OBJ.mtl	Mtl	additional file of OBJ file of FP JA_DD_385_73	303	16-6-2020 13:06	JA_Codebook.pdf	
JA_3Dmodel_FP_JA_DD_385_73_2500000f_OBJ.obj	Obj	3D model of FP JA_DD_385_73 of 2,500,000 faces in the OBJ format	26149 2721	16-6-2020 13:06	JA_Codebook.pdf	
JA_3Dmodel_FP_JA_DD_385_73_2500000f_PLY.ply	Ply	3D model of FP JA_DD_385_73 of 2,500,000 faces in the PLY format	15284 8384	16-6-2020 13:06	JA_Codebook.pdf	
JA_3Dmodel_FP_JA_DD_385_73_2500000f_X3D.x3d	X3d	3D model of FP JA_DD_385_73 of 2,500,000 faces in the X3D format	14296 7095	16-6-2020 13:06	JA_Codebook.pdf	
JA_3Dmodel_FP_JA_DD1_104_87_100000f_BLEND.blend	Blend	3D model of FP JA_DD1_104_87 of 100,000 faces in the BLEND format	96811 20	16-6-2020 12:53	JA_Codebook.pdf	
JA_3Dmodel_FP_JA_DD1_104_87_100000f_DAE.dae	Dae	3D model of FP JA_DD1_104_87 of 100,000 faces in the DAE format	11862 001	16-6-2020 12:53	JA_Codebook.pdf	
JA_3Dmodel_FP_JA_DD1_104_87_100000f_FBX.fbx	Fbx	3D model of FP JA_DD1_104_87 of 100,000 faces in the FBX format	34075 32	16-6-2020 12:53	JA_Codebook.pdf	
JA_3Dmodel_FP_JA_DD1_104_87_100000f_OBJ.mtl	Mtl	additional file of OBJ file of FP JA_DD1_104_87	303	16-6-2020 12:53	JA_Codebook.pdf	

JA_3Dmodel_FP_JA_DD1_104_87_100000f_OBJ.obj	Obj	3D model of FP JA_DD1_104_87 of 100,000 faces in the OBJ format	7462573	16-6-2020 12:53	JA_Codebook.pdf	
JA_3Dmodel_FP_JA_DD1_104_87_100000f_ply.ply	Ply	3D model of FP JA_DD1_104_87 of 100,000 faces in the PLY format	4684348	16-6-2020 12:53	JA_Codebook.pdf	
JA_3Dmodel_FP_JA_DD1_104_87_100000f_X3D.x3d	X3d	3D model of FP JA_DD1_104_87 of 100,000 faces in the X3D format	8002203	16-6-2020 12:53	JA_Codebook.pdf	
JA_3Dmodel_FP_JA_DD1_104_87_JPG.jpg	Jpg	Texture of FP JA_DD1_104_87 3D model	2887451	16-6-2020 12:53		
JA_3Dmodel_FP_JA_DD1_104_87_2020000f_BLEND.blend	Blend	3D model of FP JA_DD1_104_87 of 2,020,000 faces in the BLEND format	226789480	16-6-2020 12:53	JA_Codebook.pdf	Contains only 2,020,000 faces
JA_3Dmodel_FP_JA_DD1_104_87_2020000f_DAE.dae	Dae	3D model of FP JA_DD1_104_87 of 2,020,000 faces in the DAE format	307213924	16-6-2020 12:53	JA_Codebook.pdf	Contains only 2,020,000 faces
JA_3Dmodel_FP_JA_DD1_104_87_2020000f_FBX.fbx	Fbx	3D model of FP JA_DD1_104_87 of 2,020,000 faces in the FBX format	105372076	16-6-2020 12:53	JA_Codebook.pdf	Contains only 2,020,000 faces
JA_3Dmodel_FP_JA_DD1_104_87_2020000f_OBJ.mtl	Mtl	additional file of OBJ file of FP JA_DD1_104_87	304	16-6-2020 12:53	JA_Codebook.pdf	
JA_3Dmodel_FP_JA_DD1_104_87_2020000f_OBJ.obj	Obj	3D model of FP JA_DD1_104_87 of 2,020,000 faces in the OBJ format	207270768	16-6-2020 12:53	JA_Codebook.pdf	Contains only 2,020,000 faces

JA_3Dmodel_FP_JA_DD1_104_87_2020000f_PLY.ply	Ply	3D model of FP JA_DD1_104_87 of 2,020,000 faces in the PLY format	122041250	16-6-202012:53	JA_Codebook.pdf	Contains only 2,020,000 faces
JA_3Dmodel_FP_JA_DD1_104_87_2020000f_X3D.x3d	X3d	3D model of FP JA_DD1_104_87 of 2,020,000 faces in the X3D format	114040352	16-6-202012:53	JA_Codebook.pdf	Contains only 2,020,000 faces
JA_3Dmodel_FP_JA_DD1_22_100000f_BLEND.blend	Blend	3D model of FP JA_DD1_22 of 100,000 faces in the BLEND format	11834568	16-6-202012:53	JA_Codebook.pdf	
JA_3Dmodel_FP_JA_DD1_22_100000f_DAE.dae	Dae	3D model of FP JA_DD1_22 of 100,000 faces in the DAE format	14750344	16-6-202012:53	JA_Codebook.pdf	
JA_3Dmodel_FP_JA_DD1_22_100000f_FBX.fbx	Fbx	3D model of FP JA_DD1_22 of 100,000 faces in the FBX format	4239276	16-6-202012:53	JA_Codebook.pdf	
JA_3Dmodel_FP_JA_DD1_22_100000f_OBJ.mtl	Mtl	additional file of OBJ file of FP JA_DD1_22	300	16-6-202012:53	JA_Codebook.pdf	
JA_3Dmodel_FP_JA_DD1_22_100000f_OBJ.obj	Obj	3D model of FP JA_DD1_22 of 100,000 faces in the OBJ format	9296693	16-6-202012:53	JA_Codebook.pdf	
JA_3Dmodel_FP_JA_DD1_22_100000f_PLY.ply	Ply	3D model of FP JA_DD1_22 of 100,000 faces in the PLY format	5849061	16-6-202012:53	JA_Codebook.pdf	
JA_3Dmodel_FP_JA_DD1_22_100000f_X3D.x3d	X3d	3D model of FP JA_DD1_22 of 100,000 faces in the X3D format	9947725	16-6-202012:53	JA_Codebook.pdf	

JA_3Dmodel_FP_JA_DD1_22_JPG.jpg	Jpg	Texture of FP JA_DD1_22 3D model	27554 16	16-6- 2020 12:53		
JA_3Dmodel_FP_JA_DD1_22_1000000_f_BLEND.blend	Blend	3D model of FP JA_DD1_22 of 1,000,000 faces in the BLEND format	11263 4288	16-6- 2020 12:53	JA_Codebook.pdf	Contains only 1,000,000 faces
JA_3Dmodel_FP_JA_DD1_22_1000000_f_DAE.dae	Dae	3D model of FP JA_DD1_22 of 1,000,000 faces in the DAE format	15107 8603	16-6- 2020 12:53	JA_Codebook.pdf	Contains only 1,000,000 faces
JA_3Dmodel_FP_JA_DD1_22_1000000_f_FBX.fbx	Fbx	3D model of FP JA_DD1_22 of 1,000,000 faces in the FBX format	48067 500	16-6- 2020 12:54	JA_Codebook.pdf	Contains only 1,000,000 faces
JA_3Dmodel_FP_JA_DD1_22_1000000_f_OBJ.mtl	Mtl	additional file of OBJ file of FP JA_DD1_22	301	16-6- 2020 12:54	JA_Codebook.pdf	
JA_3Dmodel_FP_JA_DD1_22_1000000_f_OBJ.obj	Obj	3D model of FP JA_DD1_22 of 1,000,000 faces in the OBJ format	10163 0121	16-6- 2020 12:54	JA_Codebook.pdf	Contains only 1,000,000 faces
JA_3Dmodel_FP_JA_DD1_22_1000000_f_PLY.ply	Ply	3D model of FP JA_DD1_22 of 1,000,000 faces in the PLY format	60311 906	16-6- 2020 12:54	JA_Codebook.pdf	Contains only 1,000,000 faces
JA_3Dmodel_FP_JA_DD1_22_1000000_f_X3D.x3d	X3d	3D model of FP JA_DD1_22 of 1,000,000 faces in the X3D format	56291 619	16-6- 2020 12:54	JA_Codebook.pdf	Contains only 1,000,000 faces
JA_3Dmodel_FP_JA_DD1_69_100000f_BLEND.blend	Blend	3D model of FP JA_DD1_69 of 100,000 faces in the BLEND format	11835 024	16-6- 2020 12:54	JA_Codebook.pdf	

JA_3Dmodel_FP_JA_DD1_69_100000f_DAE.dae	Dae	3D model of FP JA_DD1_69 of 100,000 faces in the DAE format	14740720	16-6-2020 12:54	JA_Codebook.pdf	
JA_3Dmodel_FP_JA_DD1_69_100000f_FBX.fbx	Fbx	3D model of FP JA_DD1_69 of 100,000 faces in the FBX format	4322268	16-6-2020 12:54	JA_Codebook.pdf	
JA_3Dmodel_FP_JA_DD1_69_100000f_OBJ.mtl	Mtl	additional file of OBJ file of FP JA_DD1_69	299	16-6-2020 12:54	JA_Codebook.pdf	
JA_3Dmodel_FP_JA_DD1_69_100000f_OBJ.obj	Obj	3D model of FP JA_DD1_69 of 100,000 faces in the OBJ format	9287853	16-6-2020 12:54	JA_Codebook.pdf	
JA_3Dmodel_FP_JA_DD1_69_100000f_PLY.ply	Ply	3D model of FP JA_DD1_69 of 100,000 faces in the PLY format	5815717	16-6-2020 12:54	JA_Codebook.pdf	
JA_3Dmodel_FP_JA_DD1_69_100000f_X3D.x3d	X3d	3D model of FP JA_DD1_69 of 100,000 faces in the X3D format	5413832	16-6-2020 12:54	JA_Codebook.pdf	
JA_3Dmodel_FP_JA_DD1_69_JPG.jpg	Jpg	Texture of FP JA_DD1_69 3D model	2852218	16-6-2020 12:54		
JA_3Dmodel_FP_JA_DD1_69_2500000f_BLENB.blend	Blend	3D model of FP JA_DD1_69 of 2,500,000 faces in the BLEND format	280617784	16-6-2020 12:54	JA_Codebook.pdf	
JA_3Dmodel_FP_JA_DD1_69_2500000f_DAE.dae	Dae	3D model of FP JA_DD1_69 of 2,500,000 faces in the DAE format	383825301	16-6-2020 12:47	JA_Codebook.pdf	

JA_3Dmodel_FP_JA_DD1_69_2500000 f_FBX.fbx	Fbx	3D model of FP JA_DD1_69 of 2,500,000 faces in the FBX format	12913 3356	16-6- 2020 12:47	JA_Codebook.pdf	
JA_3Dmodel_FP_JA_DD1_69_2500000 f_OBJ.mtl	Mtl	additional file of OBJ file of FP JA_DD1_69	300	16-6- 2020 12:48	JA_Codebook.pdf	
JA_3Dmodel_FP_JA_DD1_69_2500000 f_OBJ.obj	Obj	3D model of FP JA_DD1_69 of 2,500,000 faces in the OBJ format	26139 6514	16-6- 2020 12:48	JA_Codebook.pdf	
JA_3Dmodel_FP_JA_DD1_69_2500000 f_PLY.ply	Ply	3D model of FP JA_DD1_69 of 2,500,000 faces in the PLY format	15271 1898	16-6- 2020 12:47	JA_Codebook.pdf	
JA_3Dmodel_FP_JA_DD1_69_2500000 f_X3D.x3d	X3d	3D model of FP JA_DD1_69 of 2,500,000 faces in the X3D format	14278 3759	16-6- 2020 12:47	JA_Codebook.pdf	
JA_3Dmodel_FP_JA_DD1_75_100000f _BLEND.blend	Blend	3D model of FP JA_DD1_75 of 100,000 faces in the BLEND format	11834 904	16-6- 2020 12:48	JA_Codebook.pdf	
JA_3Dmodel_FP_JA_DD1_75_100000f _DAE.dae	Dae	3D model of FP JA_DD1_75 of 100,000 faces in the DAE format	14756 419	16-6- 2020 12:48	JA_Codebook.pdf	
JA_3Dmodel_FP_JA_DD1_75_100000f _FBX.fbx	Fbx	3D model of FP JA_DD1_75 of 100,000 faces in the FBX format	41009 08	16-6- 2020 12:48	JA_Codebook.pdf	
JA_3Dmodel_FP_JA_DD1_75_100000f _OBJ.mtl	Mtl	additional file of OBJ file of FP JA_DD1_75	299	16-6- 2020 12:48	JA_Codebook.pdf	

JA_3Dmodel_FP_JA_DD1_75_100000f_OBJ.obj	Obj	3D model of FP JA_DD1_75 of 100,000 faces in the OBJ format	9303687	16-6-2020 12:48	JA_Codebook.pdf	
JA_3Dmodel_FP_JA_DD1_75_100000f_PLY.ply	Ply	3D model of FP JA_DD1_75 of 100,000 faces in the PLY format	5867638	16-6-2020 12:48	JA_Codebook.pdf	
JA_3Dmodel_FP_JA_DD1_75_100000f_X3D.x3d	X3d	3D model of FP JA_DD1_75 of 100,000 faces in the X3D format	9945251	16-6-2020 12:48	JA_Codebook.pdf	
JA_3Dmodel_FP_JA_DD1_75_JPG.jpg	Jpg	Texture of FP JA_DD1_75 3D model	2507758	16-6-2020 12:48		
JA_3Dmodel_FP_JA_DD1_75_1000000f_BLEND.blend	Blend	3D model of FP JA_DD1_75 of 1,000,000 faces in the BLEND format	112634624	16-6-2020 12:48	JA_Codebook.pdf	Contains only 1,000,000 faces
JA_3Dmodel_FP_JA_DD1_75_1000000f_DAE.dae	Dae	3D model of FP JA_DD1_75 of 1,000,000 faces in the DAE format	151066425	16-6-2020 12:48	JA_Codebook.pdf	Contains only 1,000,000 faces
JA_3Dmodel_FP_JA_DD1_75_1000000f_FBX.fbx	Fbx	3D model of FP JA_DD1_75 of 1,000,000 faces in the FBX format	46237052	16-6-2020 12:48	JA_Codebook.pdf	Contains only 1,000,000 faces
JA_3Dmodel_FP_JA_DD1_75_1000000f_OBJ.mtl	Mtl	additional file of OBJ file of FP JA_DD1_75	300	16-6-2020 12:48	JA_Codebook.pdf	
JA_3Dmodel_FP_JA_DD1_75_1000000f_OBJ.obj	Obj	3D model of FP JA_DD1_75 of 1,000,000 faces in the OBJ format	101637372	16-6-2020 12:48	JA_Codebook.pdf	Contains only 1,000,000 faces

JA_3Dmodel_FP_JA_DD1_75_1000000_f_PLY.ply	Ply	3D model of FP JA_DD1_75 of 1,000,000 faces in the PLY format	60335018	16-6-2020 12:48	JA_Codebook.pdf	Contains only 1,000,000 faces
JA_3Dmodel_FP_JA_DD1_75_1000000_f_X3D.x3d	X3d	3D model of FP JA_DD1_75 of 1,000,000 faces in the X3D format	56262727	16-6-2020 12:48	JA_Codebook.pdf	Contains only 1,000,000 faces
JA_3Dmodel_FP_JA_DD1_84_100000f_BLEND.blend	Blend	3D model of FP JA_DD1_84 of 100,000 faces in the BLEND format	11835476	16-6-2020 12:48	JA_Codebook.pdf	
JA_3Dmodel_FP_JA_DD1_84_100000f_DAE.dae	Dae	3D model of FP JA_DD1_84 of 100,000 faces in the DAE format	14461314	16-6-2020 12:48	JA_Codebook.pdf	
JA_3Dmodel_FP_JA_DD1_84_100000f_FBX.fbx	Fbx	3D model of FP JA_DD1_84 of 100,000 faces in the FBX format	4060076	16-6-2020 12:48	JA_Codebook.pdf	
JA_3Dmodel_FP_JA_DD1_84_100000f_OBJ.mtl	Mtl	additional file of OBJ file of FP JA_DD1_84	299	16-6-2020 12:48	JA_Codebook.pdf	
JA_3Dmodel_FP_JA_DD1_84_100000f_OBJ.obj	Obj	3D model of FP JA_DD1_84 of 100,000 faces in the OBJ format	9315114	16-6-2020 12:48	JA_Codebook.pdf	
JA_3Dmodel_FP_JA_DD1_84_100000f_PLY.ply	Ply	3D model of FP JA_DD1_84 of 100,000 faces in the PLY format	5871814	16-6-2020 12:48	JA_Codebook.pdf	
JA_3Dmodel_FP_JA_DD1_84_100000f_X3D.x3d	X3d	3D model of FP JA_DD1_84 of 100,000 faces in the X3D format	9955701	16-6-2020 12:48	JA_Codebook.pdf	

JA_3Dmodel_FP_JA_DD1_84_JPG.jpg	Jpg	Texture of FP JA_DD1_84 3D model	21931 60	16-6- 2020 12:48		
JA_3Dmodel_FP_JA_DD1_84_2500000_f_BLEND.blend	Blend	3D model of FP JA_DD1_84 of 2,500,000 faces in the BLEND format	28063 5996	16-6- 2020 12:48	JA_Codebook.pdf	
JA_3Dmodel_FP_JA_DD1_84_2500000_f_DAE.dae	Dae	3D model of FP JA_DD1_84 of 2,500,000 faces in the DAE format	37660 7324	16-6- 2020 12:48	JA_Codebook.pdf	
JA_3Dmodel_FP_JA_DD1_84_2500000_f_FBX.fbx	Fbx	3D model of FP JA_DD1_84 of 2,500,000 faces in the FBX format	10686 4572	16-6- 2020 12:49	JA_Codebook.pdf	
JA_3Dmodel_FP_JA_DD1_84_2500000_f_OBJ.mtl	Mtl	additional file of OBJ file of FP JA_DD1_84	300	16-6- 2020 12:49	JA_Codebook.pdf	
JA_3Dmodel_FP_JA_DD1_84_2500000_f_OBJ.obj	Obj	3D model of FP JA_DD1_84 of 2,500,000 faces in the OBJ format	26158 3594	16-6- 2020 12:49	JA_Codebook.pdf	
JA_3Dmodel_FP_JA_DD1_84_2500000_f_PLY.ply	Ply	3D model of FP JA_DD1_84 of 2,500,000 faces in the PLY format	15299 5011	16-6- 2020 12:49	JA_Codebook.pdf	
JA_3Dmodel_FP_JA_DD1_84_2500000_f_X3D.x3d	X3d	3D model of FP JA_DD1_84 of 2,500,000 faces in the X3D format	14304 7878	16-6- 2020 12:49	JA_Codebook.pdf	
JA_3Dmodel_FP_JA_DD2_100000f_BLEND.blend	Blend	3D model of FP JA_DD2 of 100,000 faces in the BLEND format	11410 492	16-6- 2020 12:49	JA_Codebook.pdf	

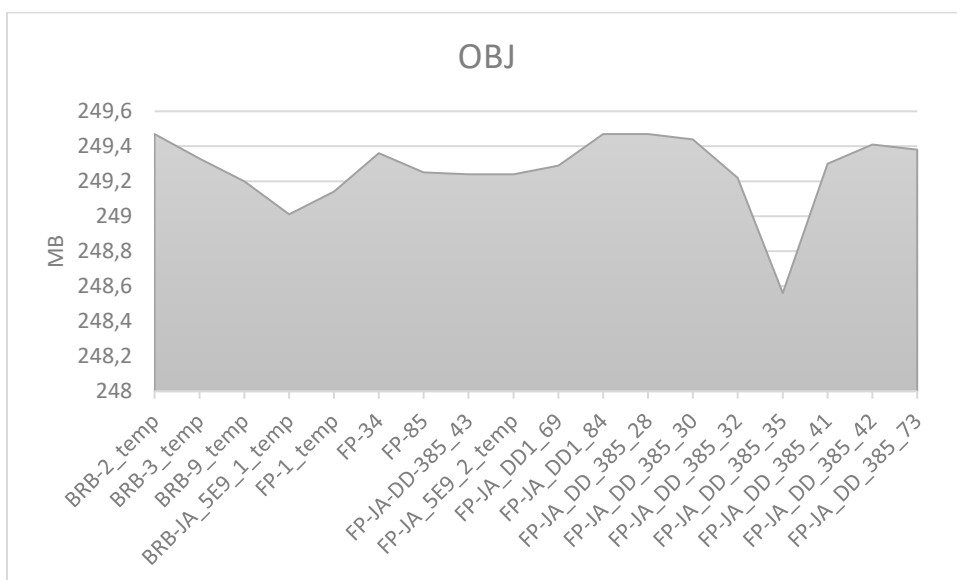
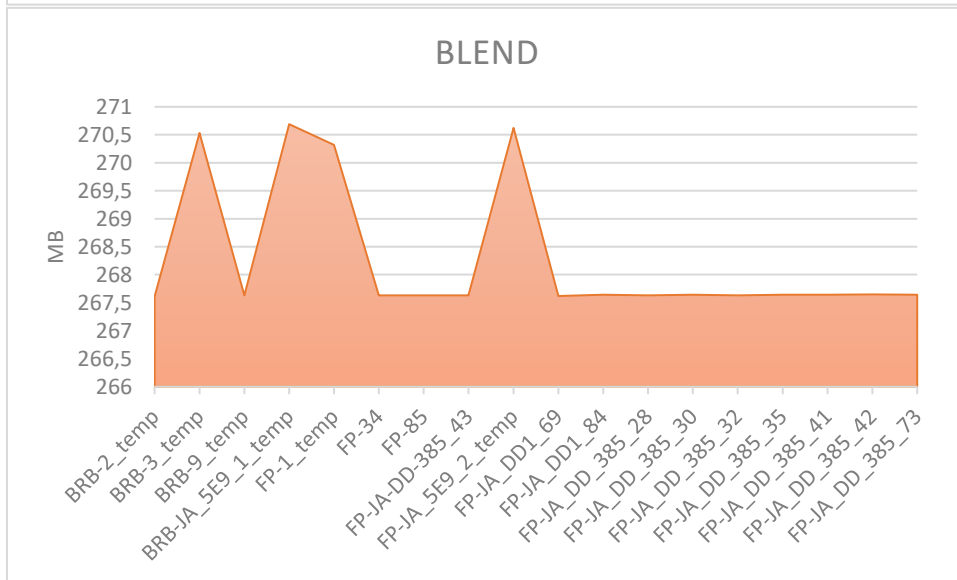
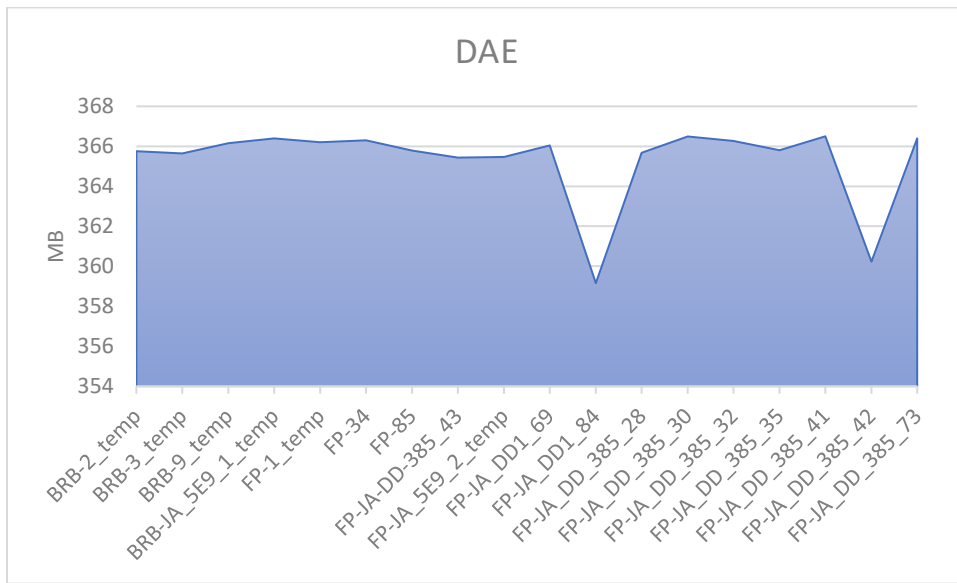
JA_3Dmodel_FP_JA_DD2_100000f_DAE.dae	Dae	3D model of FP JA_DD2 of 100,000 faces in the DAE format	13997687	16-6-2020 12:49	JA_Codebook.pdf	
JA_3Dmodel_FP_JA_DD2_100000f_FBX.fbx	Fbx	3D model of FP JA_DD2 of 100,000 faces in the FBX format	3443580	16-6-2020 12:49	JA_Codebook.pdf	
JA_3Dmodel_FP_JA_DD2_100000f_OBJ.mtl	Mtl	additional file of OBJ file of FP JA_DD2	296	16-6-2020 12:49	JA_Codebook.pdf	
JA_3Dmodel_FP_JA_DD2_100000f_OBJ.obj	Obj	3D model of FP JA_DD2 of 100,000 faces in the OBJ format	8958948	16-6-2020 12:49	JA_Codebook.pdf	
JA_3Dmodel_FP_JA_DD2_100000f_PLY.ply	Ply	3D model of FP JA_DD2 of 100,000 faces in the PLY format	5736711	16-6-2020 12:49	JA_Codebook.pdf	
JA_3Dmodel_FP_JA_DD2_100000f_X3D.x3d	X3d	3D model of FP JA_DD2 of 100,000 faces in the X3D format	5348487	16-6-2020 12:49	JA_Codebook.pdf	
JA_3Dmodel_FP_JA_DD2_JPG.jpg	Jpg	Texture of FP JA_DD2 3D model	3621700	16-6-2020 12:49		
JA_3Dmodel_FP_JA_DD2_2400000f_BLEND.blend	Blend	3D model of FP JA_DD2 of 2,400,000 faces in the BLEND format	270036356	16-6-2020 12:49	JA_Codebook.pdf	Contains only 2,400,000 faces
JA_3Dmodel_FP_JA_DD2_2400000f_DAE.dae	Dae	3D model of FP JA_DD2 of 2,400,000 faces in the DAE format	364500558	16-6-2020 12:49	JA_Codebook.pdf	Contains only 2,400,000 faces

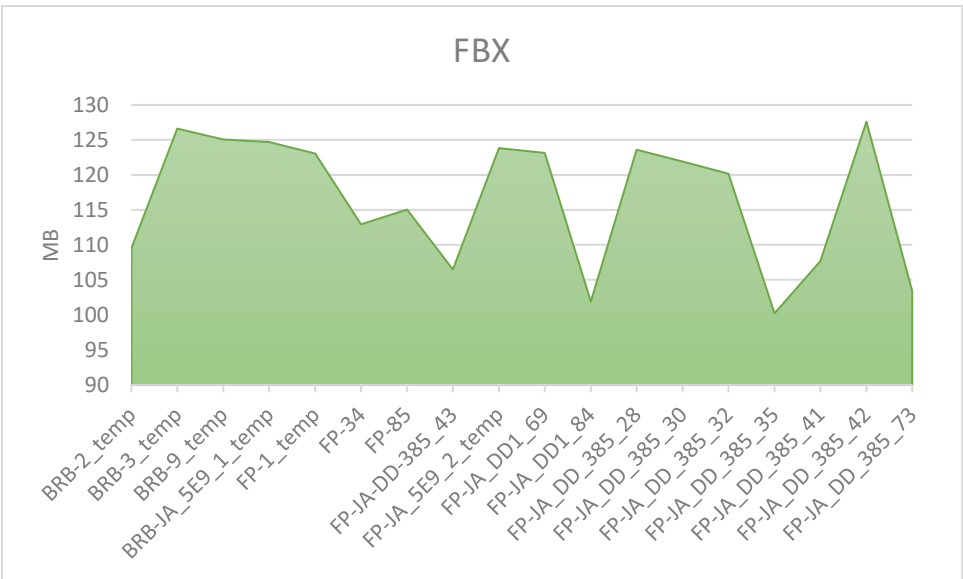
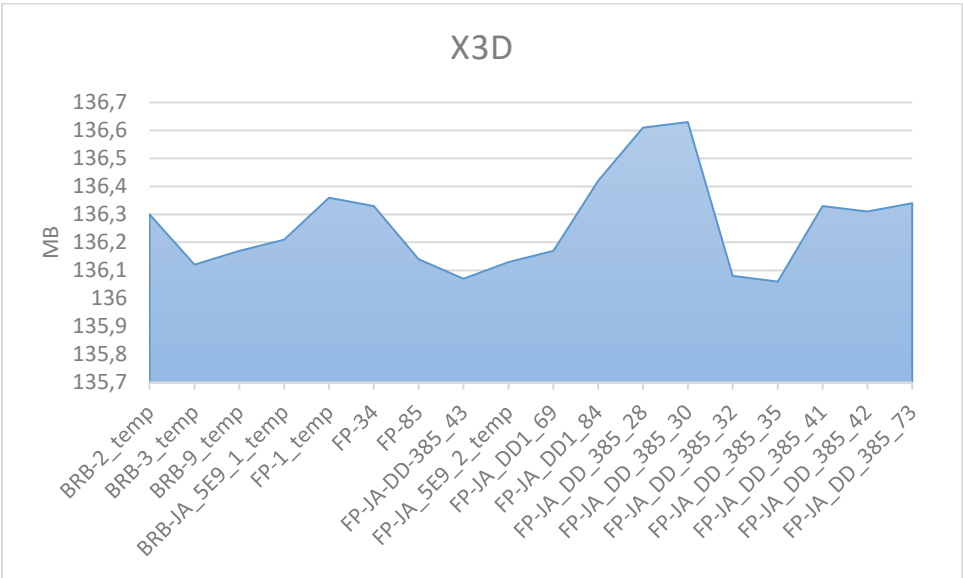
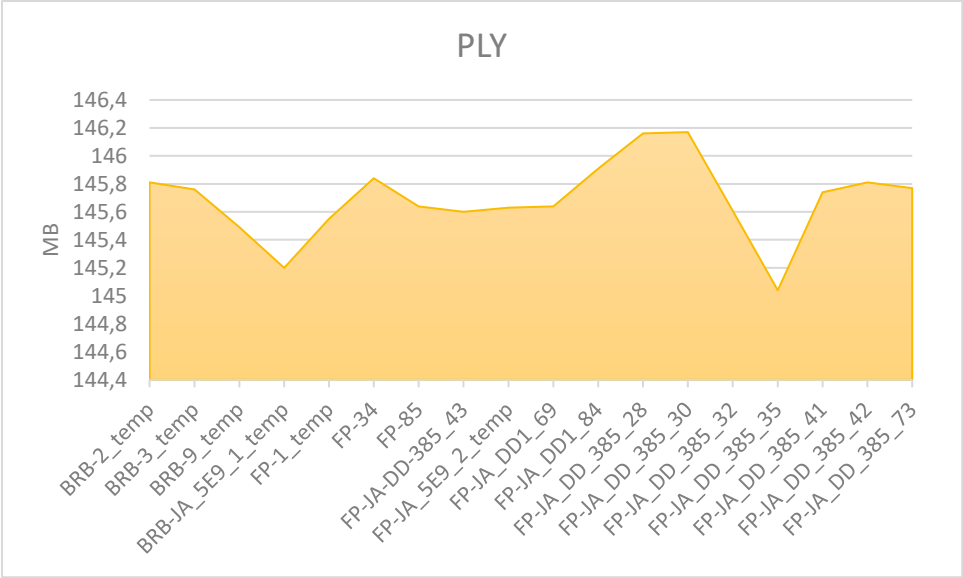
JA_3Dmodel_FP_JA_DD2_2400000f_FBX.fbx	Fbx	3D model of FP JA_DD2 of 2,400,000 faces in the FBX format	85947820	16-6-2020 12:49	JA_Codebook.pdf	Contains only 2,400,000 faces
JA_3Dmodel_FP_JA_DD2_2400000f_OBJ.mtl	Mtl	additional file of OBJ file of FP JA_DD2	297	16-6-2020 12:49	JA_Codebook.pdf	
JA_3Dmodel_FP_JA_DD2_2400000f_OBJ.obj	Obj	3D model of FP JA_DD2 of 2,400,000 faces in the OBJ format	250773628	16-6-2020 12:49	JA_Codebook.pdf	Contains only 2,400,000 faces
JA_3Dmodel_FP_JA_DD2_2400000f_PLY.ply	Ply	3D model of FP JA_DD2 of 2,400,000 faces in the PLY format	147359359	16-6-2020 12:50	JA_Codebook.pdf	Contains only 2,400,000 faces
JA_3Dmodel_FP_JA_DD2_2400000f_X3D.x3d	X3d	3D model of FP JA_DD2 of 2,400,000 faces in the X3D format	137808373	16-6-2020 12:50	JA_Codebook.pdf	Contains only 2,400,000 faces
JA_3Dmodel_FP_JA_DD_385_43_100000f_BLEND.blend	Blend	3D model of FP JA_DD_385_43 of 100,000 faces in the BLEND format	14365328	16-6-2020 12:51	JA_Codebook.pdf	
JA_3Dmodel_FP_JA_DD_385_43_100000f_DAE.dae	Dae	3D model of FP JA_DD_385_43 of 100,000 faces in the DAE format	14724175	16-6-2020 12:51	JA_Codebook.pdf	
JA_3Dmodel_FP_JA_DD_385_43_100000f_FBX.fbx	Fbx	3D model of FP JA_DD_385_43 of 100,000 faces in the FBX format	4225404	16-6-2020 12:51	JA_Codebook.pdf	
JA_3Dmodel_FP_JA_DD_385_43_100000f_OBJ.mtl	Mtl	additional file of OBJ file of FP JA_DD_385_43	302	16-6-2020 12:51	JA_Codebook.pdf	

JA_3Dmodel_FP_JA_DD_385_43_100000f_OBJ.obj	Obj	3D model of FP JA_DD_385_43 of 100,000 faces in the OBJ format	9282700	16-6-2020 12:51	JA_Codebook.pdf	
JA_3Dmodel_FP_JA_DD_385_43_100000f_PLY.ply	Ply	3D model of FP JA_DD_385_43 of 100,000 faces in the PLY format	5807136	16-6-2020 12:51	JA_Codebook.pdf	
JA_3Dmodel_FP_JA_DD_385_43_100000f_X3D.x3d	X3d	3D model of FP JA_DD_385_43 of 100,000 faces in the X3D format	9948981	16-6-2020 12:51	JA_Codebook.pdf	
JA_3Dmodel_FP_JA_DD_385_43_JPG.jpg	Jpg	Texture of FP JA_DD_385_43 3D model	2529582	16-6-2020 12:51		
JA_3Dmodel_FP_JA_DD_385_43_250000f_BLEND.blend	Blend	3D model of FP JA_DD_385_43 of 2,500,000 faces in the BLEND format	280634328	16-6-2020 12:51	JA_Codebook.pdf	
JA_3Dmodel_FP_JA_DD_385_43_250000f_DAE.dae	Dae	3D model of FP JA_DD_385_43 of 2,500,000 faces in the DAE format	383195611	16-6-2020 12:51	JA_Codebook.pdf	
JA_3Dmodel_FP_JA_DD_385_43_250000f_FBX.fbx	Fbx	3D model of FP JA_DD_385_43 of 2,500,000 faces in the FBX format	111671564	16-6-2020 12:51	JA_Codebook.pdf	
JA_3Dmodel_FP_JA_DD_385_43_250000f_OBJ.mtl	Mtl	additional file of OBJ file of FP JA_DD_385_43	303	16-6-2020 12:51	JA_Codebook.pdf	
JA_3Dmodel_FP_JA_DD_385_43_250000f_OBJ.obj	Obj	3D model of FP JA_DD_385_43 of 2,500,000 faces in the OBJ format	261351077	16-6-2020 12:51	JA_Codebook.pdf	

JA_3Dmodel_FP_JA_DD_385_43_2500000f_PLY.ply	Ply	3D model of FP JA_DD_385_43 of 2,500,000 faces in the PLY format	152673455	16-6-202012:52	JA_Codebook.pdf	
JA_3Dmodel_FP_JA_DD_385_43_2500000f_X3D.x3d	X3d	3D model of FP JA_DD_385_43 of 2,500,000 faces in the X3D format	142683695	16-6-202012:52	JA_Codebook.pdf	

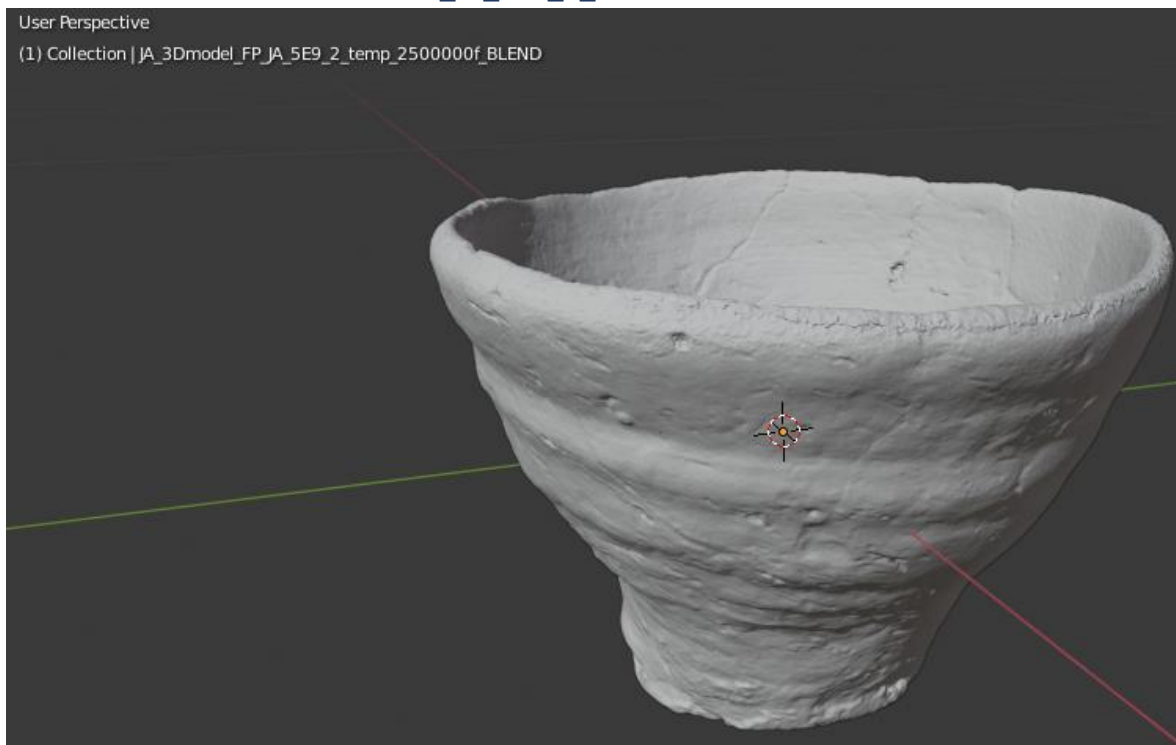
Appendix H: The original sized 3D objects sizes within each 3D file format.



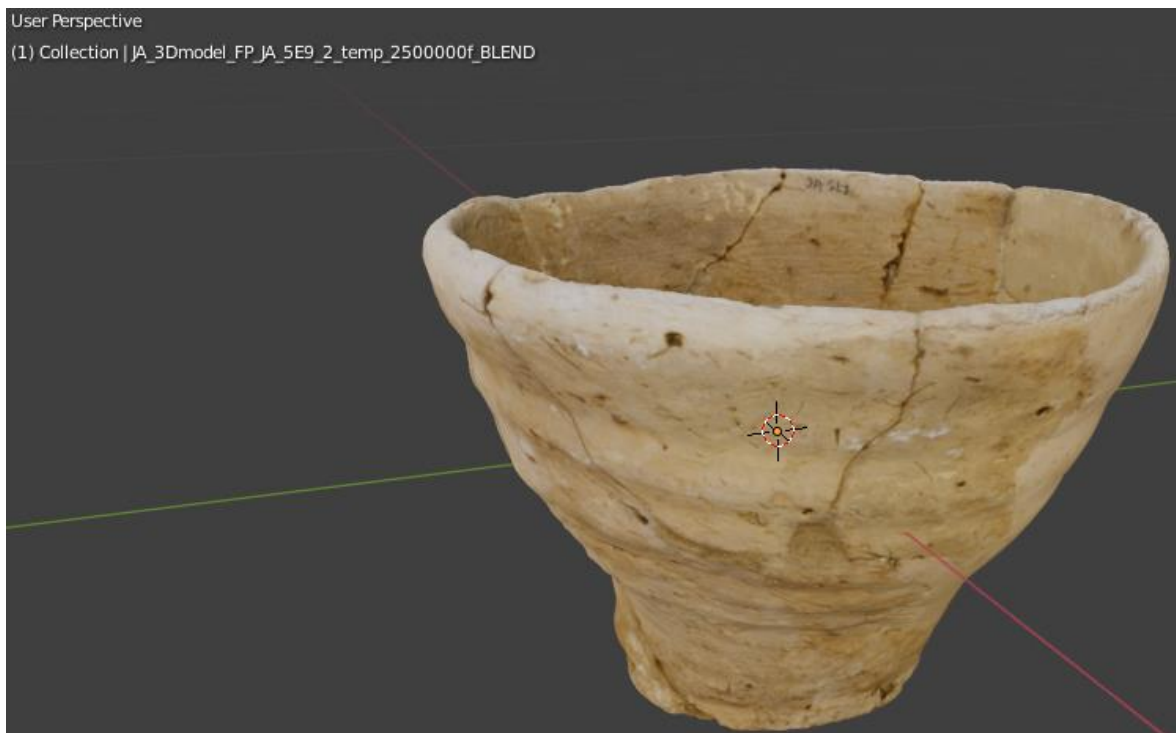


Appendix I: Figures of the visual analysis of each 3D file format of the meshes in Blender

1. The BLEND format results of FP_JA_5E9_2_TEMP



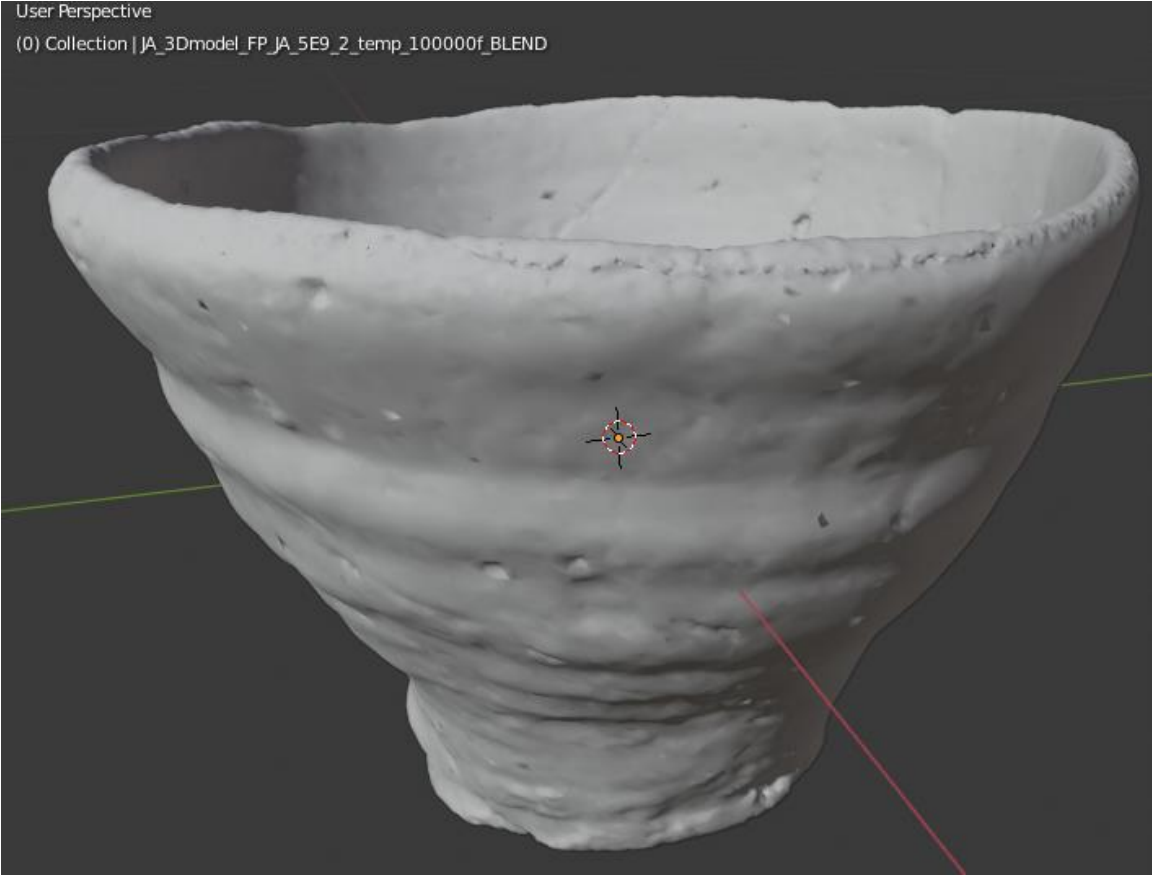
THE VISUAL OUTCOME OF THE MESH OF THE 2,500,000 FACES BLEND FILE.



THE APPLIED TEXTURE ON THE MESH OF THE 2,500,000 FACES BLEND FILE.

User Perspective

(0) Collection | JA_3Dmodel_FP_JA_5E9_2_temp_100000f_BLEND

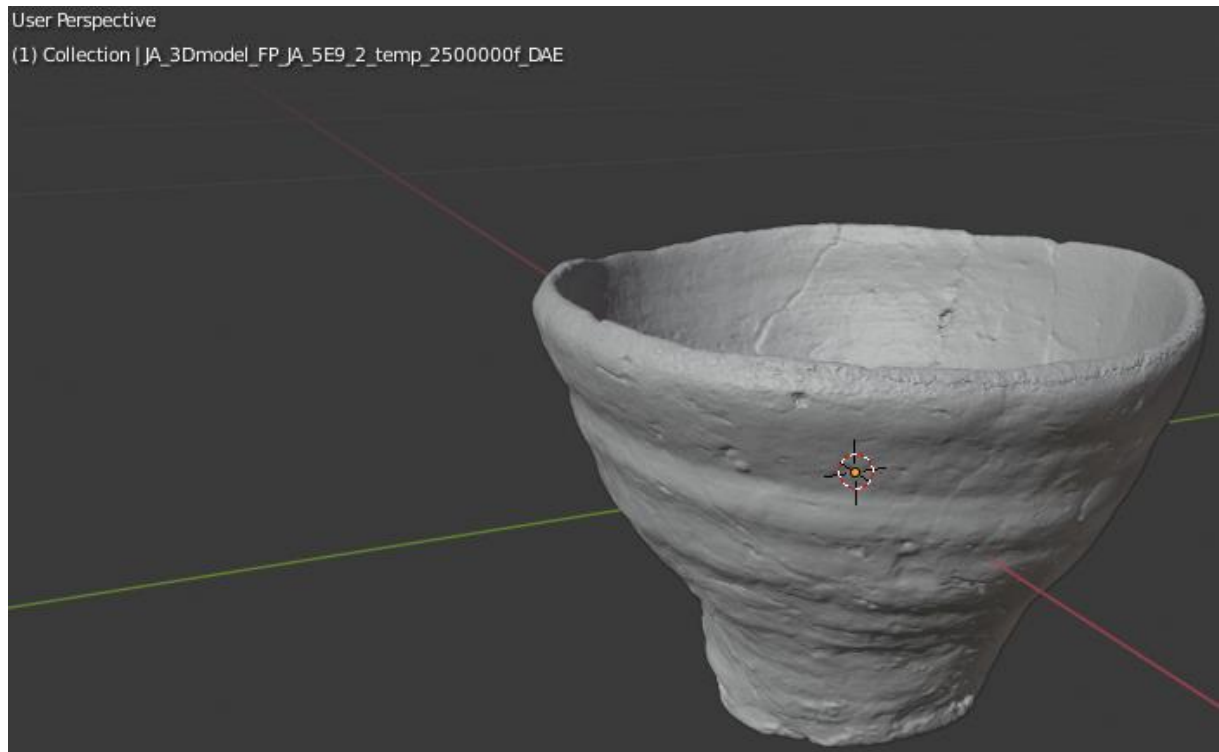


THE VISUAL OUTCOME OF THE MESH OF THE 100,000 FACES BLEND FILE.

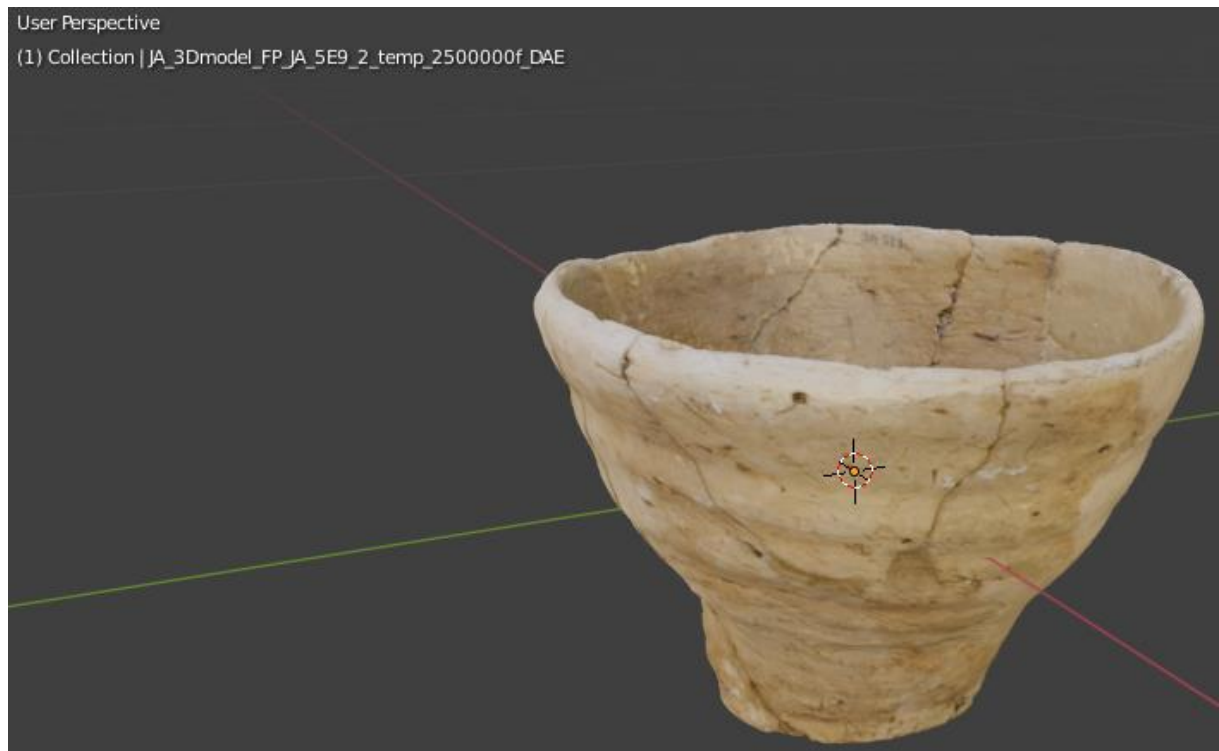


THE INTERNAL STRUCTURE OF THE 2,500,000 FACES BLEND FILE.

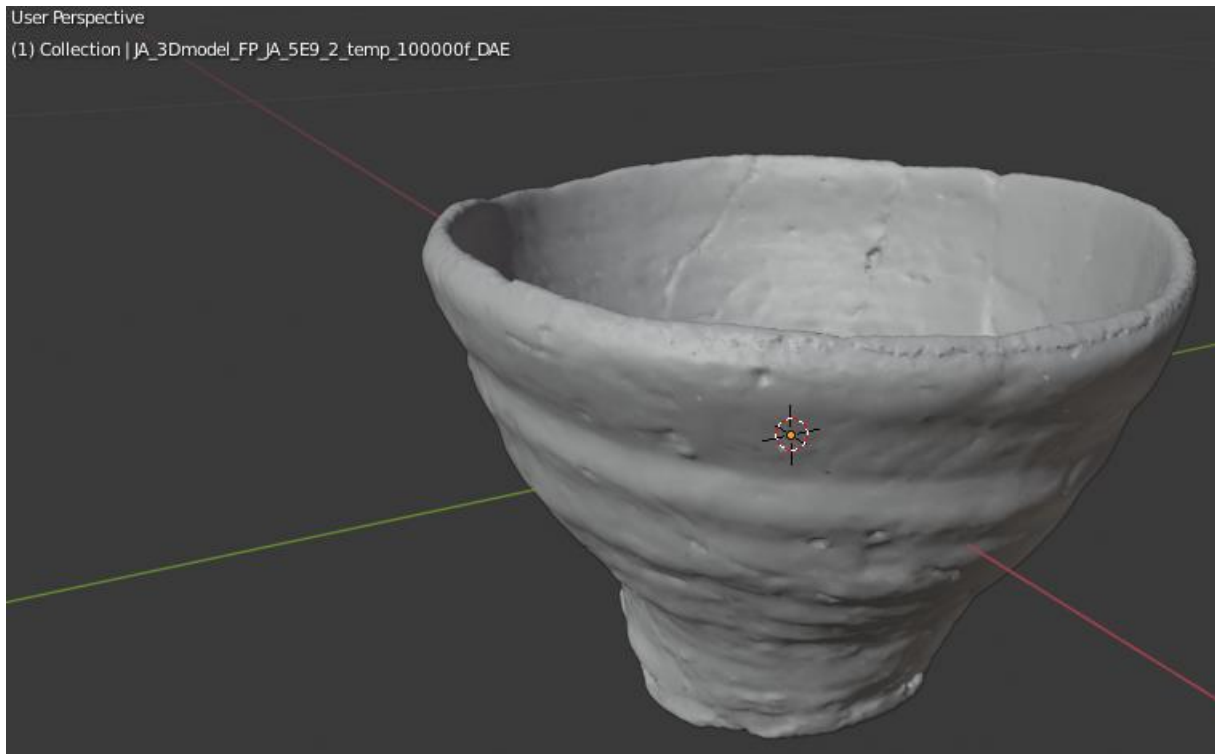
2. The DAE format results of FP_JA_5E9_2_TEMP



THE VISUAL OUTCOME OF THE MESH OF THE 2,500,000 FACES DAE FILE.



THE APPLIED TEXTURE ON THE MESH OF THE 2,500,000 FACES DAE FILE.



THE VISUAL OUTCOME OF THE MESH OF THE 100,000 FACES DAE FILE.

```

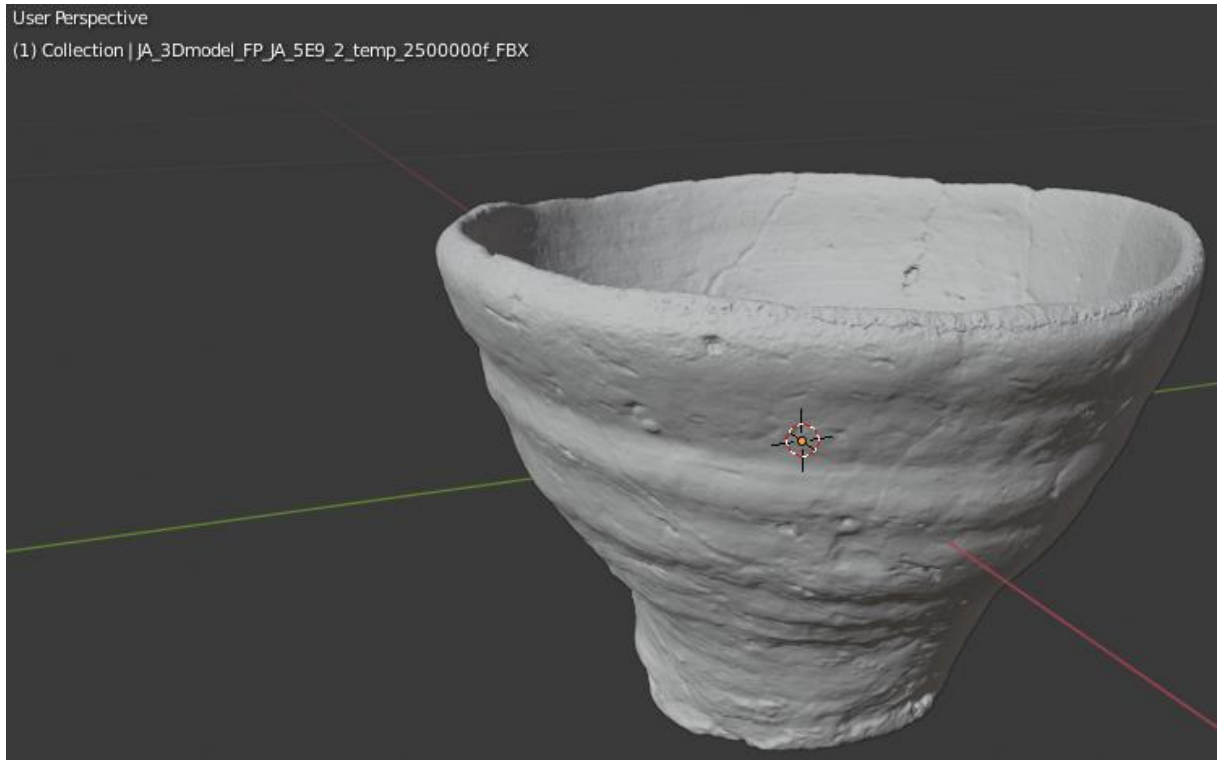
JA_3Dmodel_FP_JA_5E9_2_temp_2500000f_DAE.dae
1  <?xml version="1.0" encoding="utf-8"?>
2  <COLLADA xmlns="http://www.collada.org/2005/11/COLLADASchema" version="1.4.1" xmlns:xsi="
3  <asset>
4    <contributor>
5      <author>Blender User</author>
6      <authoring_tool>Blender 2.80.75 commit date:2019-07-29, commit time:14:47, hash:f6
7    </contributor>
8    <created>2020-04-29T21:44:47</created>
9    <modified>2020-04-29T21:44:47</modified>
10   <unit name="meter" meter="1"/>
11   <up_axis>Z_UP</up_axis>
12 </asset>
13 <library_effects>
14   <effect id="_d_model_2500000_faces-effect">
15     <profile_COMMON>
16       <newparam sid="_d_model_2500000_faces_jpg-surface">
17         <surface type="2D">
18           <init_from>_d_model_2500000_faces_jpg</init_from>
19         </surface>
20       </newparam>
21       <newparam sid="_d_model_2500000_faces_jpg-sampler">
22         <sampler2D>
23           <source>_d_model_2500000_faces_jpg-surface</source>
24         </sampler2D>
25       </newparam>
26       <technique sid="common">
27         <lambert>
28           <emission>
29             <color sid="emission">0 0 0 1</color>
30           </emission>
31           <diffuse>
32             <texture texture="_d_model_2500000_faces_jpg-sampler" texcoord="UVMap"/>
33           </diffuse>
34           <index_of_refraction>
35             <float sid="ior">1.45</float>

```

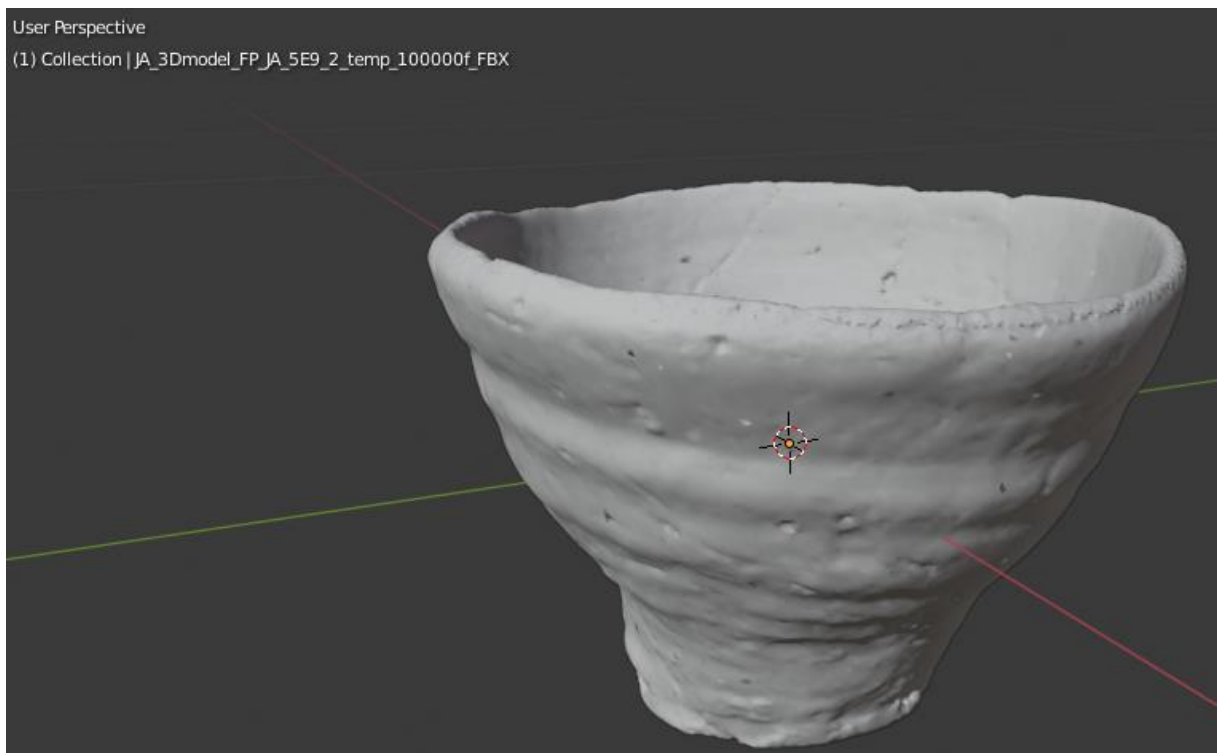
length: 383.215.201 lines: 11! Ln: 1 Col: 1 Sel: 0|0 Unix (LF) UTF-8 INS

THE INTERNAL STRUCTURE OF THE 2,500,000 FACES DAE FILE.

3. The FBX format results of FP_JA_5E9_2_TEMP



THE VISUAL OUTCOME OF THE MESH OF THE **2,500,000** FACES FBX FILE.



THE VISUAL OUTCOME OF THE MESH OF THE **100,000** FACES FBX FILE.



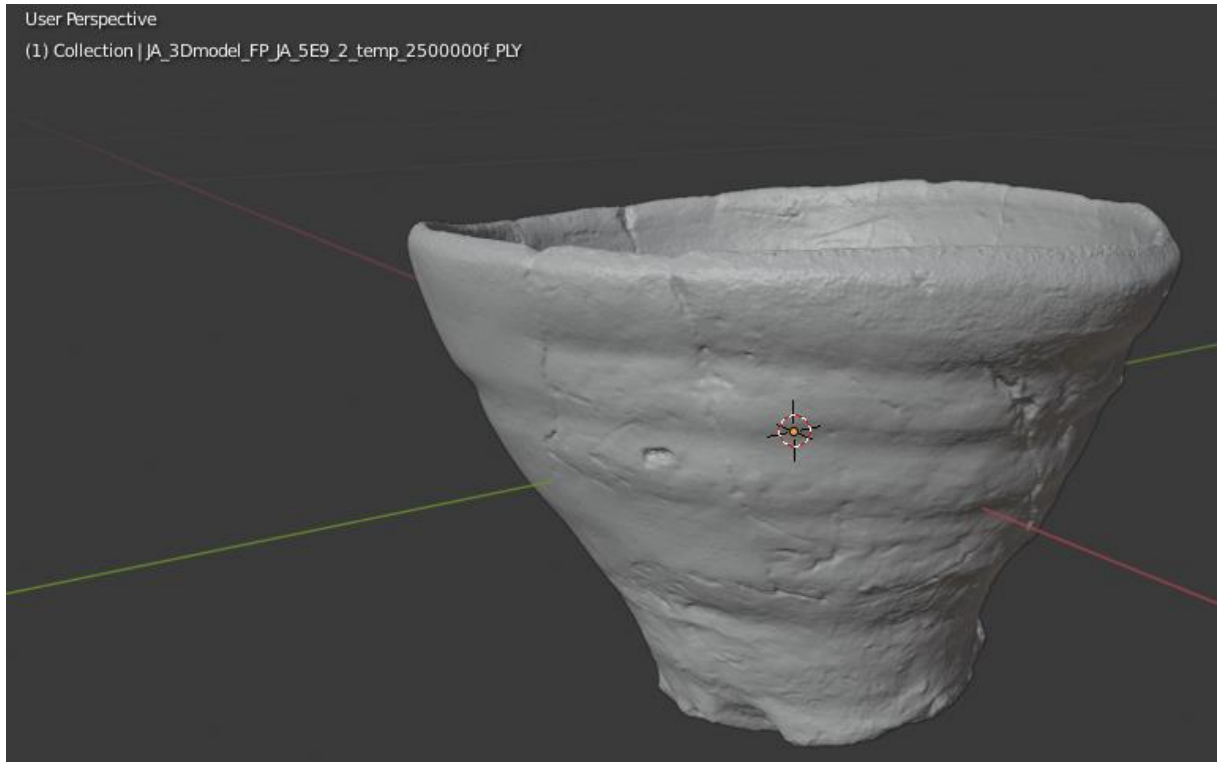
THE APPLIED TEXTURE ON THE MESH OF THE 2,500,000 FACES FBX FILE.

```

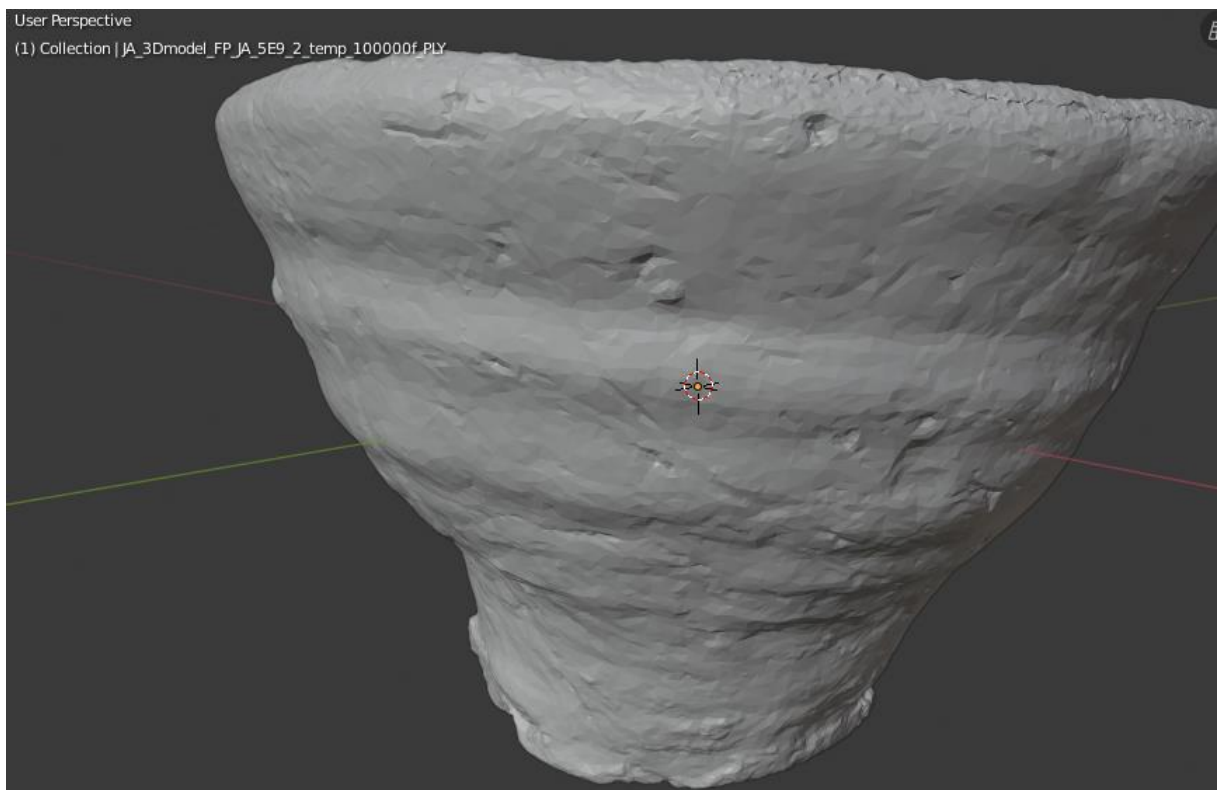
JA_3Dmodel_FP_JA_5E9_2_temp_2500000f_FBX.fbx
1 Kaydara FBX Binary
2 FBXVersionId
3
4
5
6
7
8
9
10
11
12
13
14
15
16
17
18
19
20
21
22
23
24
25
26
27
28
29
30
31
32
33
34
35
length: 129.832.748 lines: 72 Ln: 1 Col: 1 Sel: 0 | 0 Unix (LF) ANSI INS
  
```

THE INTERNAL STRUCTURE OF THE 2,500,000 FACES FBX FILE.

4. The PLY format results of FP_JA_5E9_2_TEMP



THE VISUAL OUTCOME OF THE MESH OF THE 2,500,000 FACES PLY FILE.



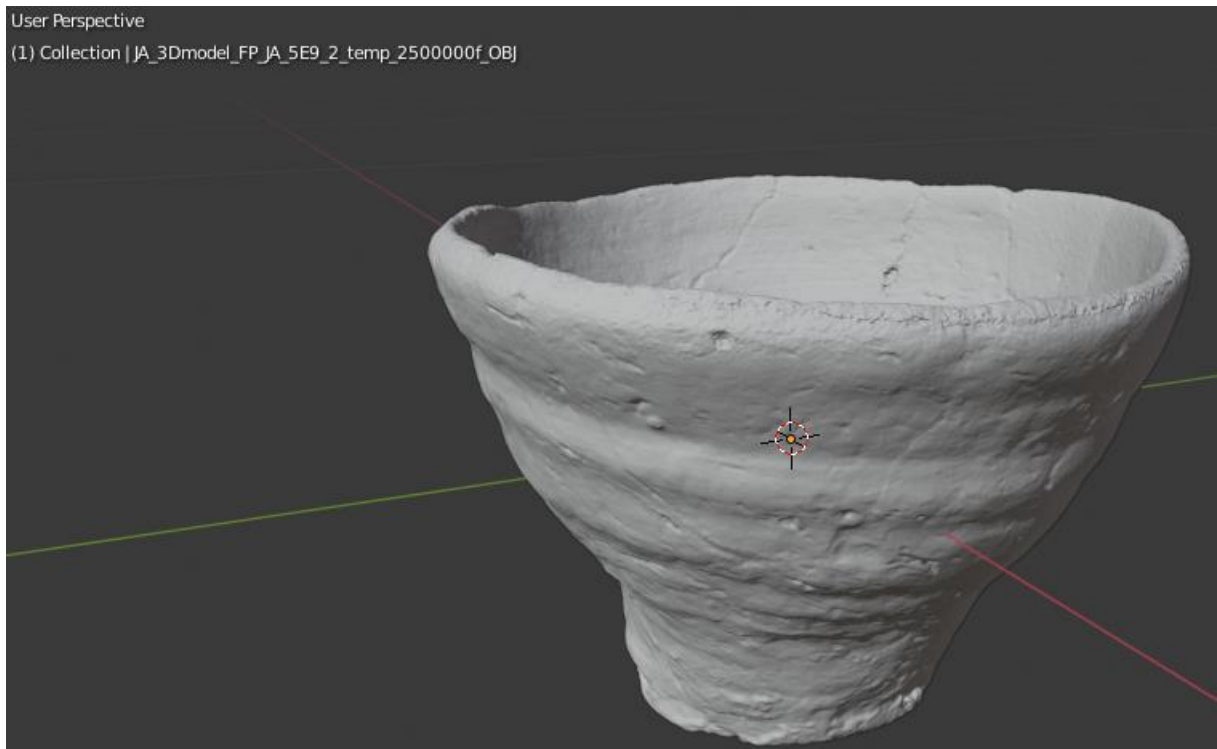
THE VISUAL OUTCOME OF THE MESH OF THE 100,000 FACES PLY FILE.

```
JA_3Dmodel_FP_JA_5E9_2_temp_2500000f_PLY.ply x
1 ply
2 format ascii 1.0
3 comment Created by Blender 2.80 (sub 75) - www.blender.org, source file: 'JA_3Dmodel_FP_JA_
4 element vertex 1257957
5 property float x
6 property float y
7 property float z
8 property float nx
9 property float ny
10 property float nz
11 property float s
12 property float t
13 element face 2500000
14 property list uchar uint vertex_indices
15 end_header
16 0.094885 0.023524 0.048576 -0.025178 -0.325449 0.945189 0.494578 0.483487
17 0.094953 0.023530 0.048657 -0.905271 -0.416669 -0.082583 0.496616 0.483441
18 0.094862 0.023623 0.048661 0.162206 -0.982421 -0.092044 0.496745 0.483195
19 0.094907 0.023402 0.048574 -0.128178 0.277596 0.952086 0.494578 0.483752
20 0.094975 0.023408 0.048647 -0.983154 0.182714 -0.001099 0.496582 0.483710
21 0.094916 0.023336 0.048638 -0.208014 0.972625 0.103305 0.496659 0.483830
22 0.094879 0.023511 0.048724 0.061037 -0.182653 -0.981262 0.496855 0.483425
23 0.094902 0.023389 0.048720 -0.055849 0.422742 -0.904508 0.496830 0.483693
24 0.094801 0.023502 0.048648 0.995788 -0.087771 0.026276 0.496824 0.483417
25 0.094826 0.023381 0.048639 0.836848 0.539109 0.094821 0.496784 0.483686
26 0.094342 -0.016757 0.049279 -0.574755 0.746025 -0.336222 0.279744 0.589254
27 0.094457 -0.016773 0.049282 0.982086 0.114902 -0.149327 0.279825 0.589076
28 0.094350 -0.016803 0.049269 -0.391766 -0.627735 -0.672628 0.279675 0.589194
29 0.094345 -0.016801 0.049357 -0.331492 -0.250587 0.909543 0.279617 0.589378
30 0.079460 0.052907 0.051081 -0.075106 -0.996826 0.026063 0.503818 0.410249
31 0.079478 0.052816 0.051060 -0.591784 0.532090 0.605487 0.503857 0.410410
32 0.079473 0.052827 0.051115 -0.406598 0.299264 -0.863186 0.503945 0.410384
33 0.079404 0.052817 0.051071 0.910428 0.372723 0.179418 0.503976 0.410290
34 0.082557 -0.043955 0.051906 0.609577 0.787164 -0.093448 0.215999 0.588355
35 0.082618 -0.044061 0.051899 0.994964 0.033753 0.094180 0.215929 0.588165

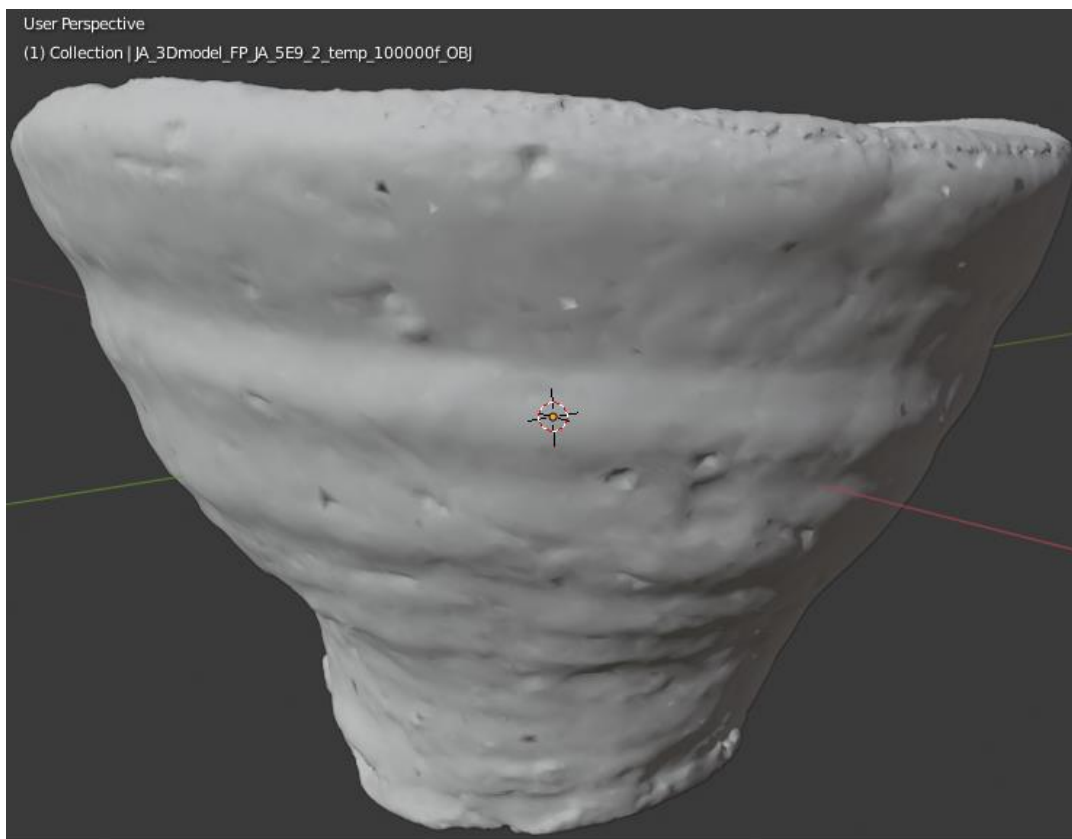
length: 152.703.258 lines: 3.7 Ln: 1 Col: 1 Sel: 0|0 Unix (LF) UTF-8 INS
```

THE INTERNAL STRUCTURE OF THE 2,500,000 FACES PLY FILE.

5. The OBJ format results of FP_JA_5E9_2_TEMP



THE VISUAL OUTCOME OF THE MESH OF THE 2,500,000 FACES OBJ FILE.



THE VISUAL OUTCOME OF THE MESH OF THE 100,000 FACES OBJ FILE.



THE APPLIED TEXTURE ON THE MESH OF THE 2,500,000 FACES OBJ FILE.

```
JA_3Dmodel_FP_JA_5E9_2_temp_2500000f_OBJ.obj x3
1 # Blender v2.80 (sub 75) OBJ File: 'JA_3Dmodel_FP_JA_5E9_2_temp_2500000f_BLEND.blend'
2 # www.blender.org
3 mtllib JA_3Dmodel_FP_JA_5E9_2_temp_2500000f_OBJ.mtl
4 o 3d_model_2500000_faces
5 v 0.094885 0.048576 -0.023524
6 v 0.094953 0.048657 -0.023530
7 v 0.094862 0.048661 -0.023623
8 v 0.094907 0.048574 -0.023402
9 v 0.094975 0.048647 -0.023408
10 v 0.094916 0.048638 -0.023336
11 v 0.094879 0.048724 -0.023511
12 v 0.094902 0.048720 -0.023389
13 v 0.094801 0.048648 -0.023502
14 v 0.094826 0.048639 -0.023381
15 v 0.094342 0.049279 0.016757
16 v 0.094457 0.049282 0.016773
17 v 0.094350 0.049269 0.016803
18 v 0.094345 0.049357 0.016801
19 v 0.079460 0.051081 -0.052907
20 v 0.079478 0.051060 -0.052816
21 v 0.079473 0.051115 -0.052827
22 v 0.079404 0.051071 -0.052817
23 v 0.082557 0.051906 0.043955
24 v 0.082618 0.051899 0.044061
25 v 0.082583 0.051787 0.044058
26 v 0.082564 0.051887 0.044167
27 v 0.082561 0.052002 0.044080
28 v 0.082425 0.051904 0.043925
29 v 0.082436 0.051845 0.043965
30 v 0.082521 0.052028 0.043963
31 v 0.082414 0.052030 0.043899
32 v 0.082425 0.052124 0.043989
33 v 0.082461 0.051776 0.044080
34 v 0.082482 0.051806 0.044206
35 v 0.082484 0.051878 0.044237
36 v 0.082473 0.051983 0.044206

length: 261.345.198 lines: 6.2 Ln: 1 Col: 1 Sel: 0|0 Unix (LF) UTF-8 INS
```

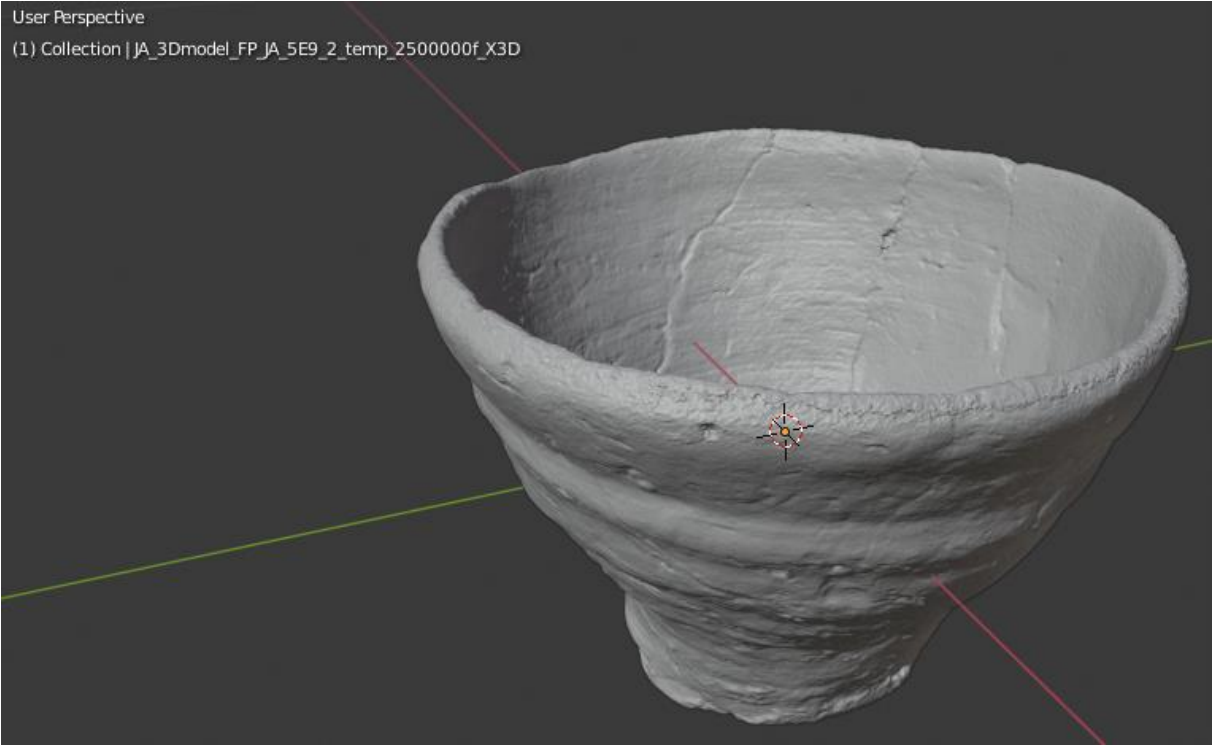
THE INTERNAL STRUCTURE OF THE 2,500,000 FACES OBJ FILE.

```
JA_3Dmodel_FP_JA_5E9_2_temp_2500000f_OBJ.mtl x
1 # Blender MTL File: 'JA_3Dmodel_FP_JA_5E9_2_temp_2500000f_BLEND.blend'
2 # Material Count: 1
3
4 newmtl 3d_model_2500000_faces
5 Ns 0.000000
6 Ka 1.000000 1.000000 1.000000
7 Kd 1.000000 1.000000 1.000000
8 Ks 0.000000 0.000000 0.000000
9 Ke 0.0 0.0 0.0
10 Ni 1.450000
11 d 1.000000
12 illum 1
13 map_Kd 3d_model_2500000_faces.jpg
14

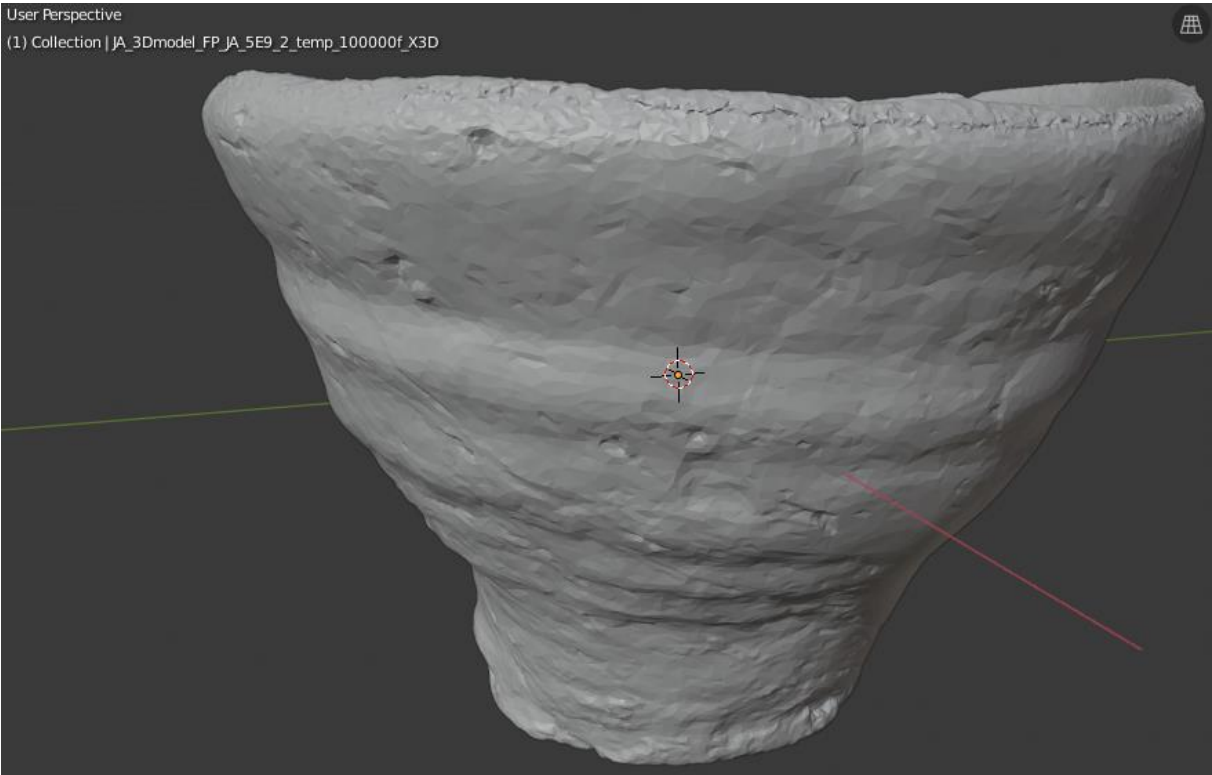
length: Ln: 1 Col: 1 Sel: 0|0 Unix (LF) UTF-8 INS
```

THE INTERNAL STRUCTURE OF THE 2,500,000 FACES MTL FILE.

6. The X3D format results of FP_JA_5E9_2_TEMP



THE VISUAL OUTCOME OF THE MESH OF THE 2,500,000 FACES X3D FILE.



THE VISUAL OUTCOME OF THE MESH OF THE 100,000 FACES X3D FILE.


```
JA_3Dmodel_FP_JA_5E9_2_temp_2500000f_X3D.x3d
1  <?xml version="1.0" encoding="UTF-8"?>
2  <!DOCTYPE X3D PUBLIC "ISO//Web3D//DTD X3D 3.0//EN" "http://www.web3d.org/specifications/x3d-3.0.d
3  <X3D version="3.0" profile="Immersive" xmlns:xsd="http://www.w3.org/2001/XMLSchema-instance" xsd:
4  <head>
5      <meta name="filename" content="JA_3Dmodel_FP_JA_5E9_2_temp_2500000f_X3D_TRIANGULATE.x3d" ,
6      <meta name="generator" content="Blender 2.80 (sub 75)" />
7  </head>
8  <Scene>
9      <NavigationInfo headlight="true"
10         visibilityLimit="0.0"
11         type=' "EXAMINE", "ANY" '
12         avatarSize="0.25, 1.75, 0.75"
13         />
14      <Background DEF="WO_World"
15         groundColor="0.051 0.051 0.051"
16         skyColor="0.051 0.051 0.051"
17         />
18      <Transform DEF="_3d_model_2500000_faces_TRANSFORM"
19         translation="0.000000 0.000000 0.000000"
20         scale="1.000000 1.000000 1.000000"
21         rotation="0.000000 -0.173648 0.984808 3.141593"
22         >
23          <Transform DEF="_3d_model_2500000_faces_ifs_TRANSFORM"
24             translation="0.000000 0.000000 0.000000"
25             scale="1.000000 1.000000 1.000000"
26             rotation="0.000000 1.000000 0.000000 0.000000"
27             >
28              <Group DEF="group_ME_3d_model_2500000_faces">
29                  <Shape>
30                      <Appearance>
31                          <Material DEF="MA_3d_model_2500000_faces"
32                             diffuseColor="1.000 1.000 1.000"
33                             specularColor="0.001 0.001 0.001"
34                             emissiveColor="0.000 0.000 0.000"
35                             ambientIntensity="0.000"
36                             shininess="0.000"

```

exte length : 142.744.921 lines : 53 Ln : 1 Col : 1 Sel : 0 | 0 Windows (CR LF) UTF-8 INS

THE INTERNAL STRUCTURE OF THE 2,500,000 FACES X3D FILE.